



SOUTH AUSTRALIAN ECONOMIC INDICATORS

EMBARGO: 11:30AM (CANBERRA TIME) FRI 3 JUL 1998

C O N T E N T S

	<i>page</i>
Notes.....	2
REVIEW	
South Australian overview	3
State accounts	3
International accounts	5
Consumption and investment	6
Production	8
Prices.....	10
Labour force and demography	13
Incomes	16
Financial markets	17
Forward outlook	20
TABLES	
List of tables	23
ADDITIONAL INFORMATION	
Publications source index	47

- For further information about these and related statistics, contact Mark Parham on Adelaide 08 8237 7645, or any ABS office shown on the back cover of this publication.

NOTES

FORTHCOMING ISSUES

<i>ISSUE</i>	<i>RELEASE DATE</i>
August 1998	31 July 1998
September 1998	1 September 1998
October 1998	1 October 1998

ABOUT THIS PUBLICATION

South Australian Economic Indicators is a monthly publication which contains the latest available data at the time of preparation for a range of statistical series that have been identified as indicators of economic activity in this State. In a number of cases the figures presented are preliminary and subject to revision in subsequent issues.

CHANGES IN THIS ISSUE

There have been some changes to the building approval time series where new houses and new residential building have been replaced by total houses and total residential building.

SYMBOLS AND OTHER USAGES

n.a.	not available
n.y.a.	not yet available
*	subject to sampling variability too high for most practical purposes
..	not applicable
0, 0.0	nil or rounded to zero

ROUNDING

Where figures have been rounded, discrepancies may occur between sums of the component items and totals.

INFORMATION

More detailed information on each series, including explanatory and technical notes, can be obtained from other Australian Bureau of Statistics publications or alternative data sources. To assist those seeking further information a source publication for each of the series has been documented in the statistical summary.

P.M. Gardner
Regional Director
South Australia

REVIEW

SOUTH AUSTRALIAN OVERVIEW

- State final demand (SFD) increased by 0.5% in the March quarter 1998 with the rate of increase slowing for the second consecutive quarter.
- The value of merchandise exports, where the final stage of production was in South Australia fell from \$473.1m in March 1998 to \$407.1m in April 1998 whilst the value of merchandise imports released from Customs control in South Australia was \$351.1m.
- The trend estimate for retail turnover has eased slightly to show 0.7% growth for April 1998.
- The trend for new motor vehicle registrations rose by 0.4% in April 1998.
- The trend estimate at current prices for private new capital expenditure for the March quarter 1998 increased 2.7% from the previous quarter.
- The trend for total dwelling units approved fell by 0.2% in April 1998, however it is still 9.3% above that of a year ago.
- For the March quarter 1998, the trend for the total number of dwelling units commenced rose by 3.9%.
- The Price Index of Established Houses in Adelaide rose by 2.9% and the Project Home Price Index increased by 1.1% during the March quarter 1998.
- At 31 December 1997 the estimated resident population was 1,482,869.
- In April 1998 there were 7,683 short-term overseas visitor arrivals and 13,095 short-term resident departures.
- The trend unemployment rate has gradually risen over the past 12 months, up from 9.7% in May 1997 to 10.0% in May 1998.
- In March 1998 a total of 200 working days were lost through industrial disputation, a decrease of 100 from the level reported in February 1998.
- The index of total hourly rates of pay (excluding bonuses) increased by 0.7% between December 1997 and March 1998.
- Total housing finance commitments (original figures including alterations and additions) decreased 4.5% to \$285.2m in April 1998.

STATE ACCOUNTS

NOTE: The ABS no longer compiles quarterly State Account estimates. However, some of the information previously included in *Australian National Accounts: State Accounts* (Cat.no. 5242.0) is now provided in a new Standard Data Service entitled *Australian National Accounts: Quarterly State Details* (Cat. no. 5206.0.40.001). This information will be available quarterly, usually within one week of the release of the quarterly Australian National Accounts.

Trend (Constant prices)

State final demand (SFD) increased by 0.5% in the March quarter 1998 with the rate of increase slowing for the second consecutive quarter from the peak of 1.8% in the September quarter 1997. SFD is following the national trend which has slowed for the third consecutive quarter, down from the peak of 1.6% in the June quarter 1997 to 0.7% in the March quarter.

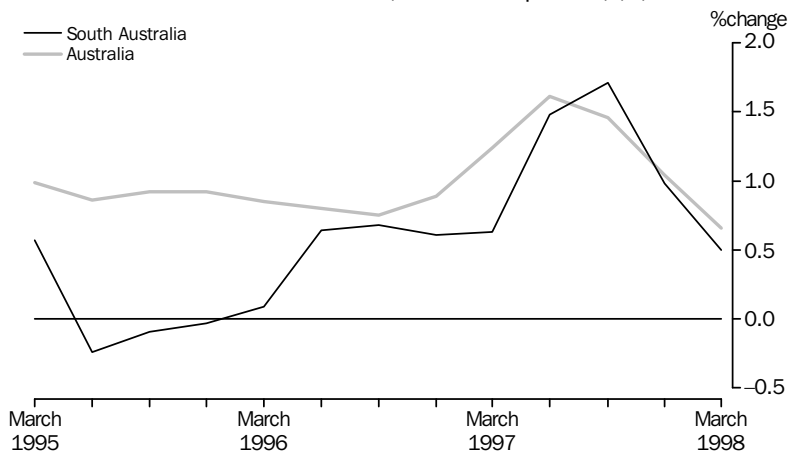
Trend (Constant prices) *continued*

Growth through the year to March quarter 1998 was 4.9%, approximately the same as the national rate of 4.8%.

Contributing to the slowing in the growth of SFD was a fall in public sector final demand of -3.2% in the March quarter and a decline in the growth rate of private gross fixed capital expenditure to 2.6%.

Private final consumption expenditure rose 1.2% (the national rate was 0.8%). Growth through the year to March quarter was 5.2%, slightly higher than the national rate of 4.6%. South Australia has been marginally ahead of the national rate for the past three quarters.

State final demand: **Trend** (Constant prices)(a)



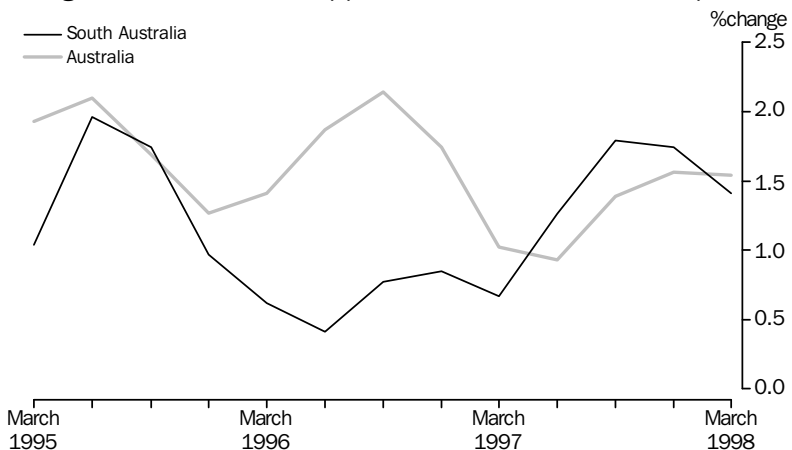
(a) Quarterly changes

Trend (Current prices)

Wages, salaries and supplements grew by 1.4% in the March quarter and has, for past two quarters, grown at approximately the same rate as the national rate.

Growth through the year to the March quarter was 6.3% compared with the national rate of 5.5%.

Wages, salaries and supplements: **Trend** (Current prices)(a)



(a) Quarterly changes

INTERNATIONAL ACCOUNTS

Merchandise exports

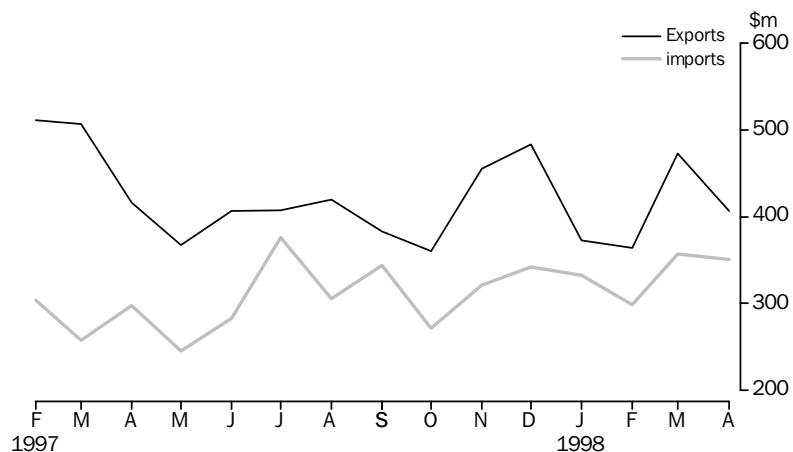
The value of merchandise exports, where the final stage of production was in South Australia fell from \$473.1m in March 1998 to \$407.1m in April 1998. This was a decrease of 13.9% on the previous month and a fall of 2.3% on the previous year. All major commodity groups with the exception of cereal and cereal preparations experienced a decrease in April 1998 compared with March 1998 with the major contributors being road vehicles, parts and accessories down \$13.4m to \$24.2m and wool and sheepskins down \$9.7m to \$15.5m.

The major destinations of South Australian exports in April 1998 were Japan (\$44.7m) and United Kingdom (\$38.9m). Most regions showed a decrease on the previous month especially exports to the Asian region where exports to Japan were down \$3.6m, China down \$24.4m and Hong Kong down \$7.1m. Exports to the East Asia region were down from \$180.0m in March 1998 to \$125.8m in April 1998 the lowest value since January 1997. Exports to the United States of America were also down significantly from \$63.8m in March 1998 to \$38.6m in April 1998.

Merchandise imports

The value of merchandise imports released from Customs control in South Australia was \$351.0m in April 1998. This represents a 1.7% decrease from March 1998 and a 18.0% increase when compared with the same time last year. The major commodities imported during April 1998 were machinery \$113.4m, other manufactured goods \$63.1m and road vehicles and accessories \$61.7m.

Merchandise exports and imports



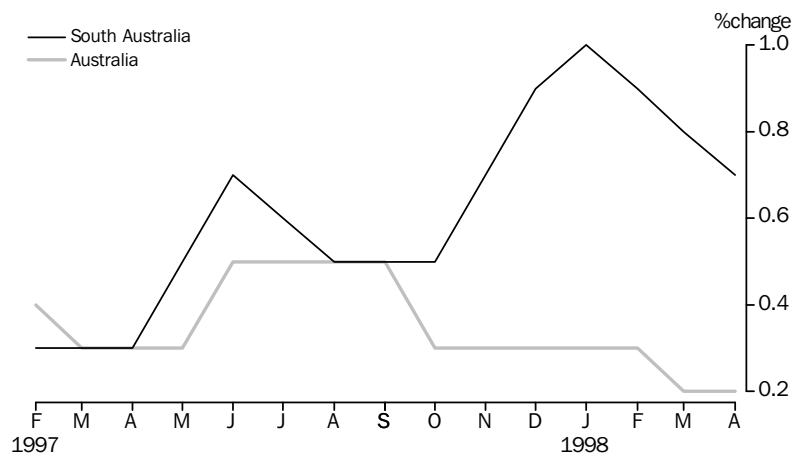
CONSUMPTION AND INVESTMENT

Retail turnover

The trend estimate for retail turnover has eased slightly to show 0.7% growth for April 1998. Department stores and the household good group were in decline whilst all other groups have recorded moderate to strong increases over the previous month.

Over the three months to March 1998 the trend estimate for retail turnover has increased \$20.8m, with the main contributors being food retailing (\$11.9m) and hospitality and services (\$5.9m) and other retailing (\$2.9m).

Retail turnover: Trend



In original terms, South Australian retail turnover for April 1998 was \$848.6m, a rise of 4.7% from March 1998 and 11.4% from April 1997.

Australian turnover was \$10,970.9m, a 1.8% and 6.1% increase for the corresponding periods above. The South Australian share of the Australian total was 7.7%.

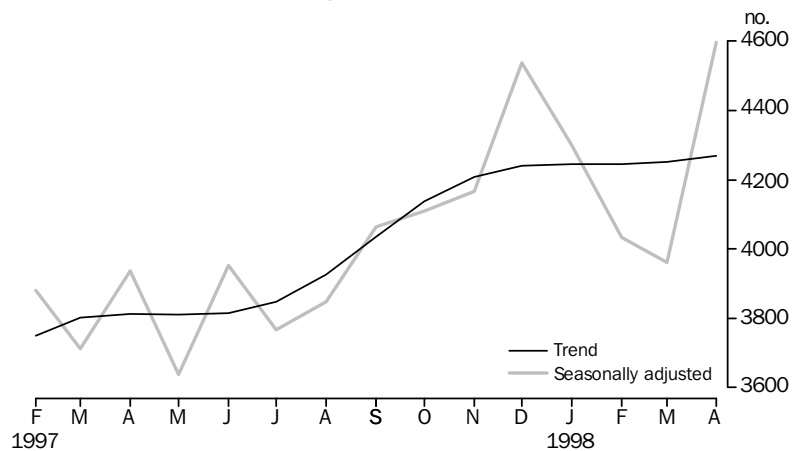
New motor vehicle registrations

The trend for new motor vehicle registrations rose by 0.4% in April 1998. This follows an increase of 0.2% last month. The annual increase was 11.9%. The Australian figure fell 0.5% in April 1998 compared with last month and increased 12.9% on April 1997.

In original terms new motor vehicle registrations were 4,063 in April 1998, a decrease of 6.6% on last month. The leading makers of vehicles registered in South Australia for April 1998 were Holden (805 vehicles), Ford (570), Mitsubishi (505), Toyota (503), Hyundai (158), Nissan (128) and Mazda (97).

Australian total registrations of new motor vehicles (original figures) for April 1998 were 60,647 vehicles a fall of 11.2% from March 1998 and an annual increase of 6.2%.

New motor vehicle registrations

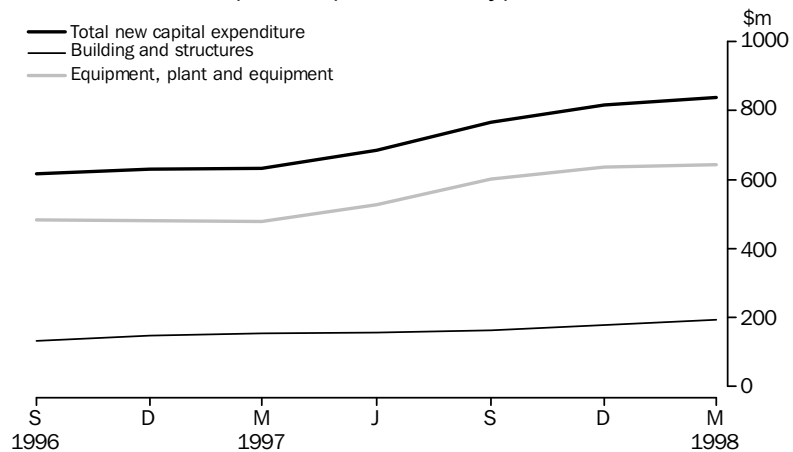


Private new capital expenditure

The trend estimate at current prices for private new capital expenditure for the March quarter 1998 increased 2.7% from the previous quarter. Expenditure on both buildings and equipment increased, up 8.4% and 1.1% respectively. Since March quarter 1997, total expenditure has increased by \$205m (32.4%). Expenditure on buildings has increased by \$40m (26.0%), and equipment has increased by \$165m (34.4%).

In original terms, private new capital expenditure for the March quarter 1998 was \$721m, a decrease of 24.3% on the previous quarter and 38.4% on the March quarter 1997. Equipment, plant and machinery accounted for \$534m and buildings and structures \$188m.

Private new capital expenditure, type of asset: **Trend**



Tourist accommodation

The number of rooms available in hotels, motels and guesthouses in South Australia for December quarter 1997 fell by 54 (0.5%) from December quarter 1996 to 10,897. The room occupancy rate increased to 58.3%, the highest December quarter rate recorded since the commencement of the Survey in 1975. Takings for all accommodation types increased when compared to December quarter 1996, with holiday flats, units and houses having the largest percentage increase, up 24.6%. Average takings per room night occupied rose to \$82 for hotels, motels and guesthouses.

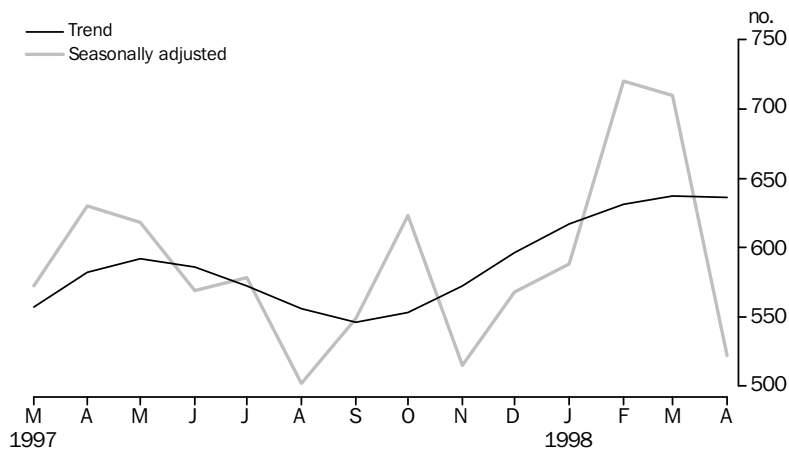
PRODUCTION

Building approvals

The trend for total dwelling units approved in South Australia fell by 0.2% in April 1998, however it is still 9.3% above that of a year ago. In original terms, the total number of dwelling units approved for April 1998 was 502, down 32.0% from the previous month and 20.1% lower than that of a year earlier.

For Australia, the trend for total dwelling units approved increased by 1.7% over the last month. South Australia was the only mainland State not to record a growth in total dwelling units trend estimates. In original terms, South Australia accounted for 3.6% of the total dwelling units approved in Australia during April 1998.

Dwelling units approved



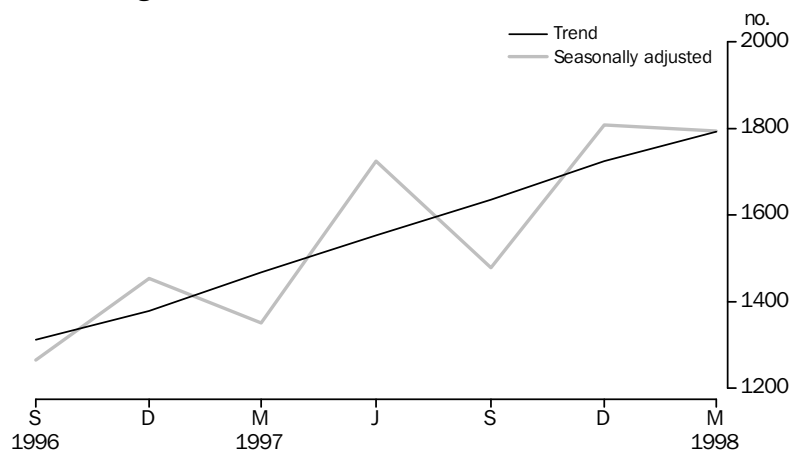
In April 1998 the total value of building approved for South Australia was \$88.3 million of which \$44.0m was new residential building and \$34.6m was non-residential building. Other business premises, offices and entertainment and recreational categories were the three highest contributors (\$10.8m, \$8.3m and \$6.3m respectively) to this value for April 1998.

Building activity

For the March quarter 1998, the trend for the total number of dwelling units commenced in South Australia rose by 3.9% and was 22.2% above the level of a year earlier. Corresponding figures for Australia were 4.4% and 16.9%.

In original terms, 1,656 dwellings were commenced in the State during the March quarter 1998, a decrease of 250 or 13.1% from the previous quarter. The March quarter level represents 4.7% of all dwelling units commenced in Australia, compared with 4.9% for the December quarter 1997.

Dwelling units commenced

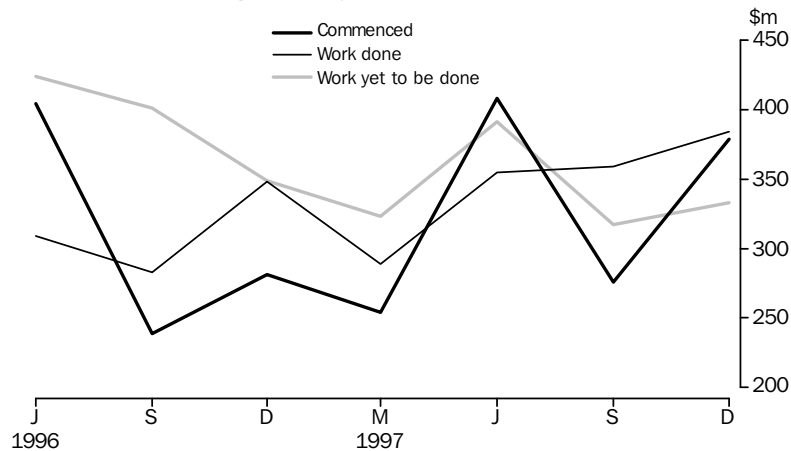


The total value of building work commenced in South Australia during the December quarter 1997 rose by 37.3% to \$378.7m. While the value of new residential building increased by 33.7%, non-residential building increased by 49.9%, with the main increases occurring in shops, offices and educational categories.

The total value of building work done during the December quarter 1997 rose by 6.9% to \$384.1m compared with a 5.2% increase nationally. When compared with the December quarter 1996, South Australia recorded a 10.4% increase in total building work done while the increase nationally was 11.8%.

The total value of building work yet to be done at the end of December 1997 was \$332.7m. Although this was an increase of 5.0% on the figure at the end of September, it remained at an unchanged 2.7% of the corresponding national figure.

Value of building activity



Engineering construction

The value of engineering construction work done for the December quarter 1997 rose by 18.5% to \$299.4m, compared with a national increase of 14.8%. The December quarter level represents 7.2% of the national figure, compared with 7.0% for the September quarter. In South Australia, work commenced during the December quarter fell by 49.4% to \$206.7m, compared with a national fall of 18.8%. As a result, the State's proportion of the national total of commencements fell from 8.4% for the September quarter 1997 to 5.2% for the December quarter.

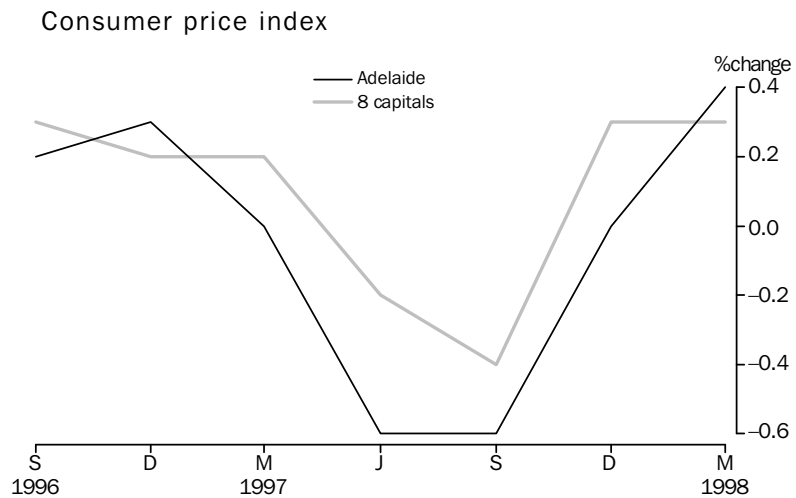
PRICES

Consumer Price Index

The Consumer Price Index (all groups) in Adelaide rose 0.4% between the December quarter 1997 and the March quarter 1998. The groups which contributed most to the overall increase this quarter were health and personal care, recreation and education and food. Partially offsetting these increases were the falls in the transportation and clothing groups.

In annual terms, the index has shown a 0.7% decrease between March 1997 and March 1998.

The Consumer Price Index for the weighted average of eight capital cities rose 0.3% from the previous quarter and fell 0.2% compared with last year.

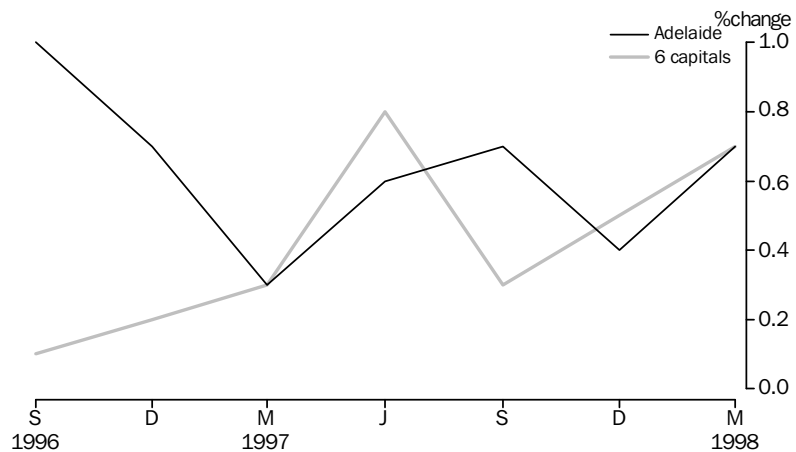


House building materials index

The Price Index of Materials used in House Building rose by 0.7% for the March quarter 1998 in Adelaide. Increases in softwood and aluminium windows were the main contributors to the rise, being offset with decreases in ready-mixed concrete. The weighted average of the six State capitals recorded a 0.7% increase in the same period.

Adelaide recorded a rise of 2.4% in the Index for the 12 months to March quarter, with the weighted average of the six State capitals recording a 2.2% increase.

Materials used in house building

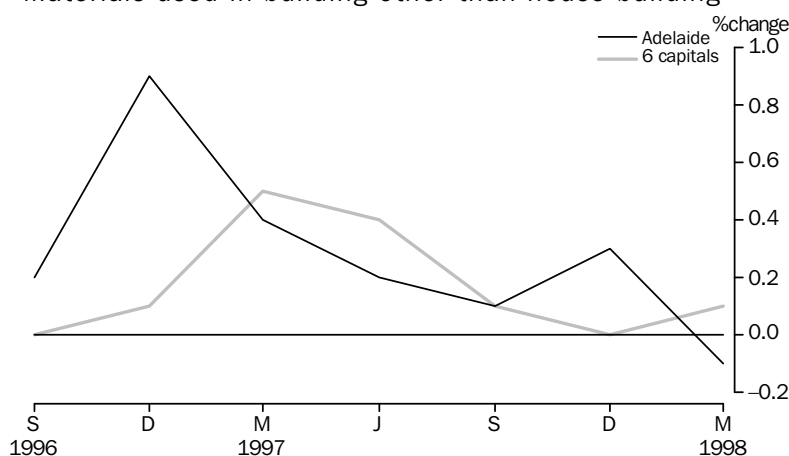


Non-house building materials index

A decrease of 0.1% was recorded in the Price Index of Materials used in Building other than House Building for the March quarter for Adelaide. Materials to record decreases were ready-mixed concrete, paint and some plumbing items, while structural timber, pre-cast concrete products and aluminium windows recorded increases. For the same period, the weighted average of the six State capitals rose 0.1%.

For the 12 months to March quarter 1998, Adelaide recorded a rise of 0.4% in the Index, while the weighted average of the six State capitals showed a 0.6% increase in the same period.

Materials used in building other than house building



House prices indexes

During the March quarter 1998 the Price Index of Established Houses in Adelaide rose by 2.9%, while over the year to the March quarter the index increased 4.3%. Over the corresponding period, the weighted average of the eight capital cities index increased 2.5% and 7.7% respectively.

The Project Home Price Index increased by 1.1% during the March quarter 1998 and 5.6% when compared with the same time the previous year. Nationally, the weighted average of eight capital cities index rose 0.4% from the December quarter and 1.1% from the March quarter 1997.

Passenger transport cost index

The Passenger Transport Cost Index measures changes in the costs of operating a public transport passenger bus service in Adelaide. Costs covered include labour costs, leasing charges, registration and insurance, repairs and maintenance, fuel and overheads. The index has been compiled on a quarterly basis from September 1995 with a base of 100.0 in 1993-94. The All Groups index number for March quarter 1998 is 110.5, up from 108.3 in the previous quarter. This rise is due to increases in wages and salaries, and repairs and maintenance. The prices for the other items in the index remained steady and did not show changes from the last quarter, apart from bus operating costs which decreased from 105.3 to 103.9 as a result of price falls in distillate.

LABOUR FORCE AND DEMOGRAPHY

Population

At 31 December 1997 the estimated resident population of South Australia was 1,482,869. This was an increase of 1,271 persons from the September quarter and was due to a natural increase of 1,544 persons partly offset by net migration loss of 273 persons.

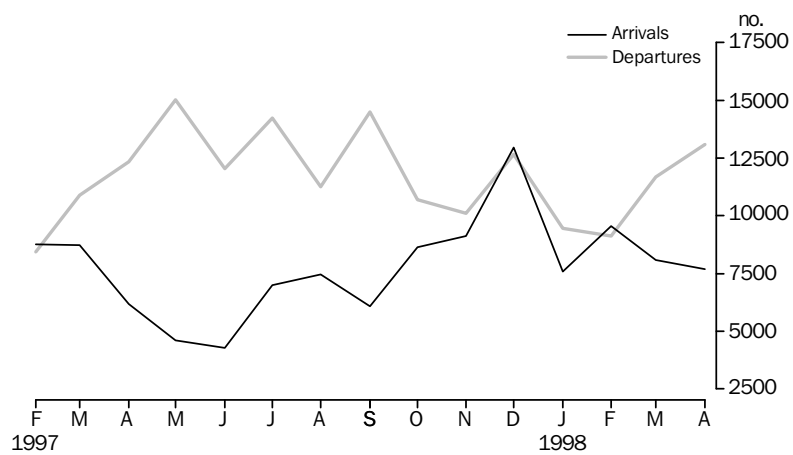
Short-term overseas visitor arrivals

In April 1998 there were 7,683 short-term overseas visitor arrivals to South Australia, a decrease of 4.7% on the previous month. A comparison with the same period last year shows that there was a rise of 24.5%. For Australia there was a 0.7% increase on the previous month and a 4.7% on an annual basis. The proportion of short-term visitors to South Australia was 2.3%

Short-term resident departures

There were 13,095 short-term resident departures in April 1998. This represents a rise of 12.1% from last month and a 6.1% increase on last year. The Australian data for the same periods shows a rise of 6.5% and 23.4%. South Australia accounted for 5.0% of all short-term resident departures.

Short-term arrivals and departures

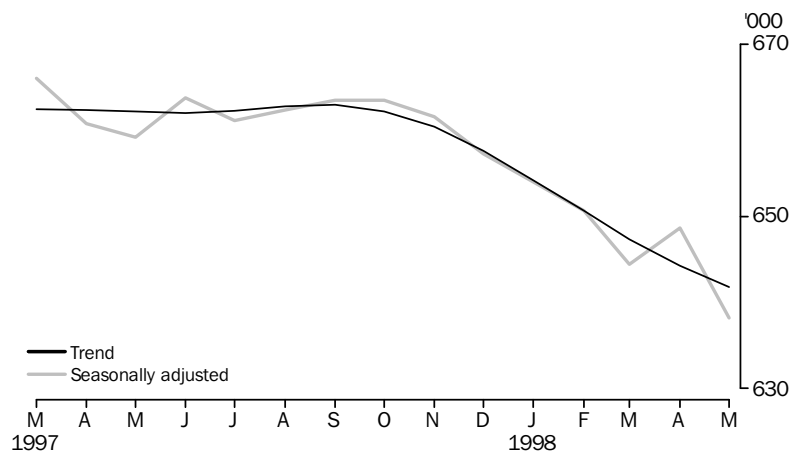


Employment

The trend estimate of employed persons in South Australia was 641,800 in May 1998. This was 3.1% lower than the level of 12 months ago (662,100). Over one-half of this recent decrease can be attributed to a decline in female part-time employment down 10,400.

At May 1998, the trend estimate of the labour force participation rate in South Australia was 59.9%. This was the lowest level recorded since May 1985, when the rate was 59.8%. For males and females, the corresponding participation rates were 69.6% and 50.4% respectively. The female level was the lowest since February 1989 when 50.3% was recorded.

Employed persons

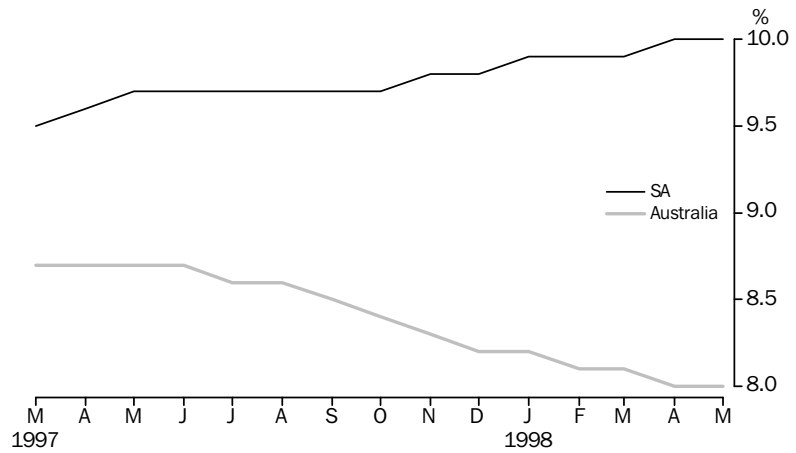


Unemployment

The trend unemployment rate has gradually risen over the past 12 months, up from 9.7% in May 1997 to 10.0% in May 1998. The latest estimate was the highest recorded on the mainland. In contrast, the trend estimate of the unemployment rate for Australia has decreased from 8.7% in May 1997 to 8.0% in May 1998.

In original, unadjusted terms, the teenage full-time unemployment rate in South Australia was 38.2% in May 1998, up slightly from the 38.0% recorded in the previous month.

Unemployment rates: **Trend**

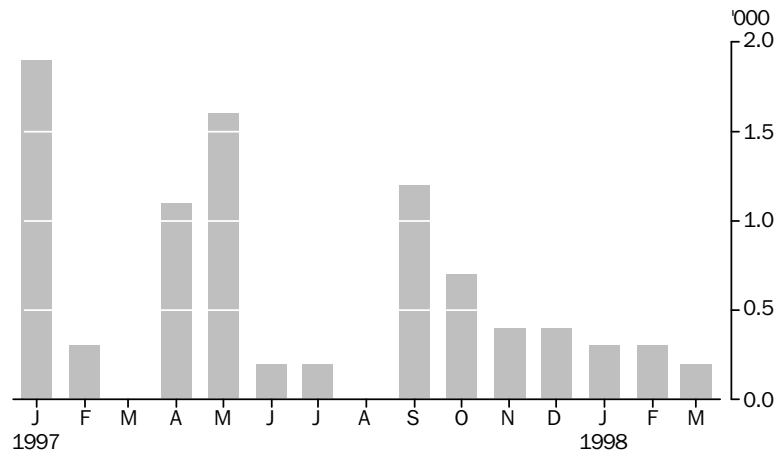


Industrial disputes

In March 1998 a total of 200 working days were lost through industrial disputation, a decrease of 100 from the level reported in February 1998. South Australia had a low level of industrial disputation, contributing less than 1% to the national level of 50,200 working days lost.

The number of working days lost in South Australia in the 12 months to March 1998 was 6,600, much lower than the 29,700 days lost in the 12 months to March 1997.

Working days lost



Overtime

In original terms, the proportion of employees who worked overtime in May 1998 was 12.8%, compared with 15.9% in May 1997.

In May 1998, employees who worked overtime in South Australia recorded an average of 5.6 overtime hours per week. This was lower than the 6.8 overtime hours recorded 12 months earlier.

INCOMES

Average weekly earnings

The trend estimate of average weekly ordinary time earnings of full-time adult employees increased 1.4% from November 1997 to February 1998. The full-time adult ordinary time earnings for males and females rose 0.9% and 2.8% respectively.

Between February 1997 and February 1998, the trend estimate of average weekly ordinary time earnings of full-time adult male employees increased 3.7% whilst the female rate increased 6.6%.

For Australia, the trend estimate of full-time adult ordinary time earnings for males and females rose by 4.5% and 4.1% respectively in the 12 months to February 1998.

Note: Since it is an average of earnings across all employees, changes in average weekly earnings may occur through changes in employment as well as changes in pay levels.

Wage cost Index

The Wage Cost Index measures quarterly changes in wage and salary costs for employee jobs. Hourly rates of pay are collected on both an ordinary time and total time basis, with or without bonuses. The first reference period is the quarter to December 1997. This new measure replaces the discontinued award rates of pay index.

In South Australia, the index of total hourly rates of pay (excluding bonuses) increased by 0.7% between December 1997 and March 1998. Nationally, the corresponding increase was 0.9%.

In South Australia, the index of ordinary time hourly rates of pay (excluding bonuses) rose by 0.7% in the quarter to March 1998. The Australian rate increased 0.9% for the same period.

FINANCIAL MARKETS

Housing finance

The trend estimate for the value of commitments (excluding alterations and additions) decreased marginally during April 1998 to \$256.4m, the fifth consecutive monthly decline. South Australia's trend estimate was 2.8% higher the previous April. Nationally the trend remained flat for the month, 1.3% lower than the previous April. The seasonally adjusted value of commitments for South Australia increased 9.2% to \$270.7m to be 8.1% higher than April 1997.

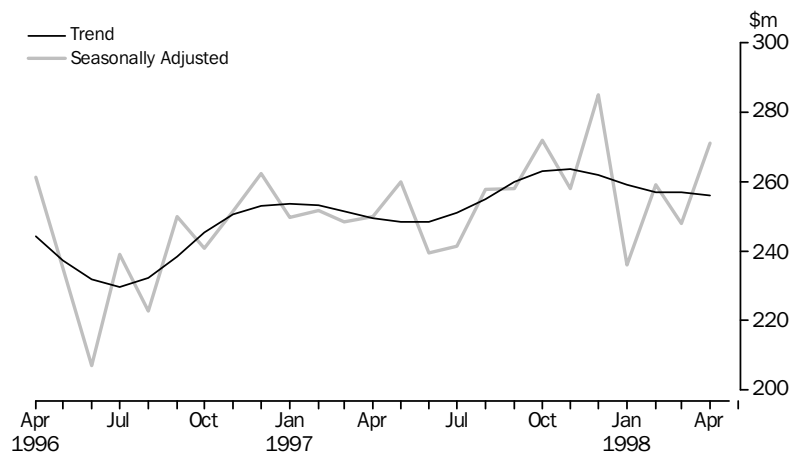
Total housing finance commitments (original figures including alterations and additions) decreased 4.5% to \$285.2m, to be only marginally below the previous April. Nationally new lending commitments were down 3.9% for the month. The number of dwellings financed in South Australia decreased 3.4% to 3,236, 2.5% below the previous April. The average value of commitments decreased during the month to \$84,200, compared with \$81,500 a year ago.

The decrease in total housing was largely due to the fall in commitments for the purchase of established dwellings, down \$12.8m to \$160.5m following the highest month in two years. The other major falls were for alterations and additions, down \$3.2 m to \$12.6 m and finance for the purchase of newly erected dwellings, down \$1.9m to \$6.2m.

Both refinancing and construction of dwellings increased for the third consecutive month.

Refinancing increased 6.1% to \$70.7m, 9.0% above April 1997, to represent 24.8% of total new lending commitments. Construction of dwellings increased 1.2% to \$35.2m, 14.7% above the previous April. Nationally commitments for construction fell 5.2% following the highest month since the 1994 peak.

Secured housing finance commitments (a)



(a) Excludes alterations and additions. Includes refinancing.

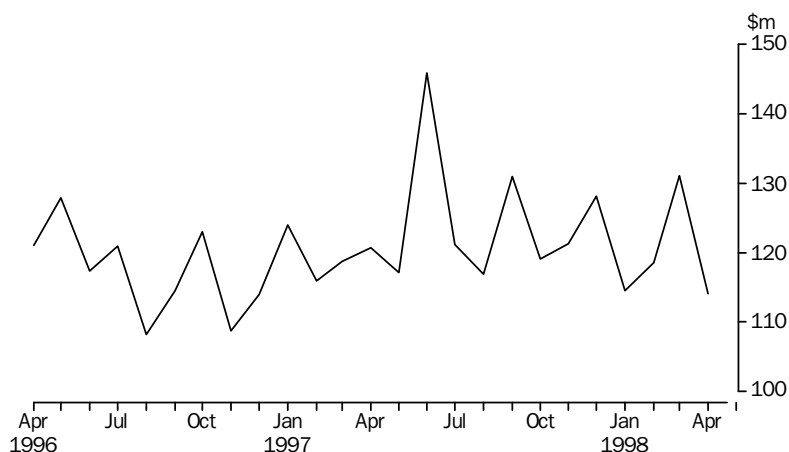
Personal finance

Total commitments in April 1998 decreased 9.2% to \$227.6m following the second highest month. Nationally the decrease for the month was 3.9%, 6.6% above the previous April. In seasonally adjusted terms the national total fell for the third consecutive month, down 2.5%.

Fixed loan commitments decreased 13.0% to \$114.1m, 5.5% below the previous April. The largest decline was for used motor cars and station wagons, down 9.6% to \$36.0m, 1.4% below April 1997. Commitments for finance for new motor cars and station wagons were down 14.3% to \$12.7m, 17.8% below the previous April. Refinancing decreased 18.8% to \$12.0m and debt consolidation decreased 23.1% to \$9.0m. All four of these categories had substantial increases in the previous month.

Revolving credit facilities were down 5.1% to \$113.5m with secured new and increased credit limits decreasing 17.4% to \$61.2m, following the high March figure. Unsecured revolving credit facilities increased for the third consecutive month, up 14.8% to \$52.3m, 24.5% above April 1997.

Fixed loan commitments, all lenders



Commercial finance

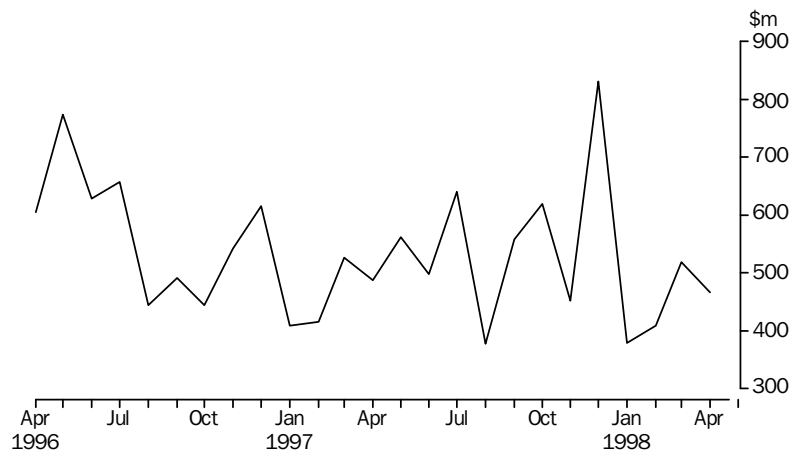
Total commercial finance commitments fell 10.0% to \$466.3m in April 1998, 4.4% below the previous April. Nationally commercial finance commitments increased 9.5% for the month, taking South Australia's proportion of the national total down to 3.4%.

Commitments under fixed loan facilities decreased 16.0% to \$303.5m, compared with a 4.0% decrease for Australia. Major decreases occurred for property and business services, down 36.5% to \$34.7m, agriculture, forestry, fishing and hunting, down 30.5% to \$41.0m, retail trade, down 30.2% to \$21.3m and construction, down 47.0% to \$7.6m. All four of these categories had significant increases in March. The main increase in April was for community services, up 33.0% to \$18.6m.

Commercial finance *continued*

Revolving credit facilities increased 3.9% to \$162.8m, 13.6% below the previous April. The main increases was for finance, investment and insurance, up \$13.6 m to \$57.5m, the third consecutive monthly increase. Mining also increased substantially, by \$4.9m to \$5.5m. The main decreases occurred for manufacturing, down \$11.6m to \$17.5m and property and business services, down \$9.4m to \$6.7m.

Commercial finance commitments, all lenders



Lease finance

New finance lease commitments in April 1998 decreased 33.4% to \$16.1m, 25.5% below the previous April. Nationally the decrease for the month was 18.0%, 1.7% above the previous April. Seasonally adjusted the national decrease for the month was 11.5% but the national total continued to be significantly above the corresponding month of the previous year as occurred for the previous ten months.

The main decrease for South Australia was new finance lease commitments for new heavy trucks, down \$4.3m to \$1.3m following the highest month for this category since July 1985. The other main decreases were office machines, down \$1.5m to \$1.4m, agricultural machinery and equipment, down \$0.9m to \$1.4m, manufacturing equipment, down \$0.9m to \$1.0m and new motor cars and station wagons not subject to depreciation (the main category), down \$0.7m to \$4.1m. The main increase was construction and earth moving equipment, up \$0.6m to \$1.2m.

FORWARD OUTLOOK

Composite leading indicator for Australia

The Composite Leading Indicator (CLI) is a single time series produced by aggregating eight individual economic indicators, and has been developed by the ABS as an experimental series to supplement existing forms of economic analysis and modelling.

The CLI summarises the early signals contained in a selection of economic indicators and is designed to assist the detection of turning points between successive expansions and slow downs of economic activity as measured by constant price GDP(A). It does not attempt to forecast the level of economic activity.

Composite leading indicator for Australia

In the March quarter 1998 :

- the experimental CLI fell 0.17%, following a fall of 0.03% in the December quarter 1997. This second consecutive fall gives a provisional peak in the CLI in the September quarter 1997.

The quarterly data are released in more detail in the *Australian Economic Indicators* (Cat. no. 1350.0). The CLI was the topic of the Focus article in the September 1993 edition of *South Australian Economic Indicators* (Cat. no. 1307.4). A review of the performance of the CLI and its components was published in the July 1997 issue of Cat. no. 1350.0.

Business expectations

Surveys of business expectations have been available to decision makers for a number of years from several sources. These surveys provided *qualitative* indicators in the form of the net proportion of businesses expecting a rise or fall in future business conditions. Since the December quarter 1993, the ABS has been compiling a *quantitative* indicator of business expectations in the form of an expected weighted aggregate change in a range of economic variables. These data are available on a quarterly basis in *Australian Business Expectations* (Cat. no. 5250.0).

South Australia, Short-term outlook expected aggregate change

.....

EXPECTED AGGREGATE CHANGE
OVER THE PREVIOUS QUARTER.....

	Jun qtr 1997	Sep qtr 1997	Dec qtr 1997	Mar qtr 1998	Jun qtr 1998
<i>Business performance indicators</i>	%	%	%	%	%
Trading performance					
Operating income	2.8	0.0	5.1	0.2	1.9
Selling prices	1.1	0.3	0.3	0.2	0.5
Profit	14.2	-3.9	26.5	3.0	2.9
Investment					
Capital expenditure	1.0	5.4	9.5	1.5	9.8
Stocks	-0.5	-0.4	0.6	1.9	0.2
Employment					
Full time equivalent	-0.4	-0.4	1.0	0.1	-0.1

Business expectations *continued*

Short term—South Australian businesses expect an increase of 1.9% in operating income in the June quarter 1998 compared with the March quarter 1998 whilst the Australian rate was 1.7%. The investment component for South Australia was expected to be 9.8% increase in capital expenditure compared with 3.8% for Australia whilst full-time employment levels were expected to fall by 0.1% for both South Australia and Australia.

South Australia, Medium-term outlook expected aggregate change

EXPECTED AGGREGATE CHANGE
OVER THE PREVIOUS YEAR.....

	Mar qtr 1998	Jun qtr 1998	Sep qtr 1998	Dec qtr 1998	Mar qtr 1999
<i>Business performance indicators</i>	%	%	%	%	%
Trading performance					
Operating income	4.0	3.4	4.8	4.3	2.7
Selling prices	1.9	0.9	0.8	0.8	0.7
Profit	16.8	11.2	25.3	18.1	22.7
Investment					
Capital expenditure	1.9	-0.8	3.0	2.3	-2.0
Stocks	0.2	0.3	1.1	2.0	0.2
Employment					
Full time equivalent	0.2	0.0	-0.3	-1.5	-1.3

Medium term—Businesses in South Australia expect operating income in the March quarter 1999 to be 2.7% above March quarter 1998. Capital expenditure and employment indicators are showing negative change in the medium term whilst the Australian data shows a 2.0% increase in capital expenditure and a 0.1% increase in employment levels.

LIST OF TABLES

Page

TABLES

1	Statistical summary	24
	Time series	
2	State accounts—current prices	26
3	State accounts—average 1989–90 prices	27
	Merchandise exports by selected commodity group	28
5	Merchandise exports by selected countries	29
6	Merchandise exports by industry of origin	30
7	Merchandise imports by selected commodity group	31
8	Turnover of retail establishments by industry	32
9	New motor vehicle registrations by type of vehicle	33
10	Actual private new capital expenditure by selected industry and type of asset	34
11	Tourist accommodation	35
12	Building approvals	36
13	Building commencements	37
14	Value of building work done during period	38
15	Production, livestock products and selected commodities	39
16	Consumer price index, by group—Adelaide	40
17	Average retail prices of selected consumer items—Adelaide	41
18	Estimated resident population and components of population change	42
19	Civilian labour force status	43
20	Civilian labour force, unemployment and participation rates	44
21	Average weekly earnings of employees	45
22	Finance commitments	46

Indicator	SOUTH AUSTRALIA.....					AUSTRALIA.....				
	Unit	Period	Number	% change from.....		Number	% change from...		SA as a % of Aust.	Source index
				Previous period	Same period previous year		Previous period	Same period previous year		
State accounts										
Domestic final demand										
Current prices trend	\$m	Mar qtr 98	9 574	0.8	5.7	136 047	1.2	6.0	7.0	(1)
1989-90 prices trend	\$m	Mar qtr 98	8 209	0.5	4.9	117 829	0.7	4.8	7.0	(1)
Private final consumption expenditure										
Current prices trend	\$m	Mar qtr 98	6 197	1.5	5.7	84 696	1.2	5.8	7.3	(1)
1989-90 prices trend	\$m	Mar qtr 98	5 224	1.2	5.2	70 823	0.8	4.6	7.4	(1)
Private gross fixed capital expenditure										
Current prices trend	\$m	Mar qtr 98	1 471	3.7	17.5	23 985	2.3	12.3	6.1	(1)
1989-90 prices trend	\$m	Mar qtr 98	1 380	2.6	14.5	23 723	1.2	11.6	5.8	(1)
Wages, salaries and supplements										
Current prices trend	\$m	Mar qtr 98	4 815	1.4	6.3	68 512	1.5	5.5	7.0	(1)
International accounts										
Exports	\$m	Apr 98	407.1	-13.9	-2.3	6 921.8	-0.2	9.5	5.9	(2)
Imports	\$m	Apr 98	351.1	-1.7	18.0	7 446.7	-9.1	10.3	4.7	(2)
Consumption and investment										
Retail turnover										
Current prices original	\$m	Apr 98	848.6	4.7	11.4	10 970.9	1.8	6.1	7.7	(3)
Current prices trend	\$m	Apr 98	861.8	0.7	8.6	11 334.1	0.2	4.3	7.6	(3)
1989-90 prices original	\$m	Mar qtr 98	1 985.2	-13.8	7.6	26 286.1	-15.9	2.6	7.6	(3)
New motor vehicle registrations										
Original	no.	Apr 98	4 063	-6.6	9.3	60 647	-11.2	6.2	6.7	(4)
Trend	no.	Apr 98	4 268	0.4	11.9	64 866	0.5	12.9	6.6	(4)
Private new capital expenditure										
Current prices original	\$m	Mar qtr 98	721	-24.3	38.4	10 326	-19.4	3.7	7.0	(5)
Current prices trend	\$m	Mar qtr 98	838	2.7	32.4	11 724	1.7	6.8	7.1	(5)
Private new capital expenditure	\$m	1996-97	2 580	..	37.7	43 837	..	8.3	5.9	(5)
Takings, licensed hotels, motels and guesthouses with facilities	\$m	Dec qtr 97	48.1	15.2	11.1	979.2	3.1	3.5	4.9	(6)
Production										
Dwelling unit approvals										
Original	no.	Apr 98	502	-32.0	-20.1	13 919	0.5	12.4	3.6	(7)
Trend	no.	Apr 98	636	-0.2	9.3	14 047	1.7	17.7	4.5	(7)
Dwelling units commenced	no.	Mar qtr 98	1 656	-3.1	32.8	35 156	-8.9	11.3	4.7	(8a)
Value of non-residential building approvals	\$m	Apr 98	34.6	-35.7	-11.7	1 249.0	30.1	51.8	2.8	(7)
Value of total building activity										
Commenced	\$m	Dec qtr 97	378.7	37.3	34.8	8 387.3	2.3	15.7	4.5	(8)
Work done	\$m	Dec qtr 97	384.1	6.9	10.4	8 198.5	5.2	11.8	4.7	(8)
Work yet to be done	\$m	Dec qtr 97	332.7	5.0	-4.6	12 161.9	6.1	26.9	2.7	(8)
Value of engineering construction work done	\$m	Dec qtr 97	299.4	18.5	61.1	4 149.7	14.8	11.1	7.2	(9)
Manufacturing production										
Red meat	tonnes	Apr 98	18 701	-6.9	-4.7	246 169	-3.2	-3.7	7.6	(11)
Mineral exploration expenditure (other than for petroleum)	\$m	Mar qtr 98	9.2	-19.3	27.8	220.4	-21.8	-6.5	4.2	(12)

Indicator	Unit	Period	SOUTH AUSTRALIA.....			AUSTRALIA.....				
			Number	% change from....		Number	% change from		SA as a % of Aust.	Source index
				Previous period	Same period previous year		Previous period	Same period previous year		
Prices										
CPI – All groups	1989–90=100	Mar qtr 98	121.7	0.4	-0.7	120.3	0.3	-0.2	..	(13)
Price index of materials used in house building	1989–90=100	Mar qtr 98	123.7	0.7	2.4	118.7	0.7	2.2	..	(14)
Price index of materials used in building other than houses	1989–90=100	Mar qtr 98	115.0	-0.1	0.4	114.1	0.1	0.6	..	(15)
Price index of established houses	1989–90=100	Mar qtr 98	114.0	2.9	4.3	124.2	2.5	7.7	..	(16)
Price index of project homes	1989–90=100	Mar qtr 98	113.7	1.1	5.6	110.4	0.4	1.1	..	(16)
Labour force and demography										
Population (resident at end qtr)	'000	Dec qtr 97	1 482.9	0.1	0.5	18 631.1	0.2	1.1	8.0	(17)
Short-term overseas visitor arrivals	no.	Apr 98	7 683	-4.7	24.5	341 075	0.7	4.7	2.3	(21)
Short-term resident departures	no.	Apr 98	13 095	12.1	6.1	262 493	6.5	23.4	5.0	(21)
Labour force										
Original	'000	May 98	710.6	-0.8	-2.5	9 306.1	-0.1	1.4	7.6	(18)
Trend	'000	May 98	713.1	-0.3	-2.7	9 306.0	0.1	1.2	7.7	(18)
Employed persons										
Original	'000	May 98	638.2	-1.6	-3.2	8 567.6	-0.1	2.1	7.4	(18)
Trend	'000	May 98	641.8	-0.4	-3.1	8 559.4	0.1	2.0	7.5	(18)
Participation rate										
Original(a)	%	May 98	59.7	-0.5	-1.9	63.1	-0.1	0.0	..	(18)
Trend(a)	%	May 98	59.9	-0.2	-2.1	63.1	0.0	-0.1	..	(18)
Unemployment rate										
Original(a)	%	May 98	10.2	0.8	0.6	7.9	0.0	-0.7	..	(18)
Trend(a)	%	May 98	10.0	0.0	0.3	8.0	0.0	-0.7	..	(18)
Job vacancies	'000	May 98	2.7	-18.2	-10.0	73.3	-2.9	26.2	3.7	(19)
Average weekly overtime per employee working overtime	hours	May 98	5.6	3.4	-18.4	6.7	-0.1	-4.7	..	(19)
	'000 working days lost	Mar 98	0.2	-33.3	..	50.2	27.4	6.6	0.4	(20)
Incomes										
Average weekly earnings (full-time adults; ordinary time)										
Original	\$	Feb 98	683.60	4.4	5.2	722.30	1.5	4.1	..	(22)
Trend	\$	Feb 98	675.40	1.4	4.1	720.80	1.1	4.2	..	(22)
Wage cost index (Total hourly rate excluding bonuses)										
	Sep 1997=100	Mar 98	101.5	0.7	..	101.7	0.9	(23)
Financial markets										
Secured housing finance										
Finance commitments	\$m	Apr 98	285.2	-4.5	-0.2	4 818.4	-3.9	-3.8	5.9	(24)
Personal										
Commercial	\$m	Apr 98	227.6	-9.2	0.3	3 493.3	-3.9	6.6	6.5	(25)
Lease	\$m	Apr 98	466.3	-10.0	-4.4	13 708.6	9.5	-1.6	3.4	(25)
Interest rates										
Banks new housing loans(a)	%	May 98	6.70	0.0	-0.5	..	(26)
Banks business loans(a)										
Small, medium sized business	%	May 98	7.70	-1.1	-2.1	..	(26)
Large business	%	May 98	8.05	-0.2	-1.2	..	(26)

(a) Change is shown in terms of percentage points.

Period	FINAL CONSUMPTION EXPENDITURE....		GROSS FIXED CAPITAL EXPENDITURE....		State final demand	Gross State product (I)	Wages, salaries and supplements
	Private	Government	Private	Government			
ANNUAL (\$m)							
1991-92	18 958	5 812	4 021	1 429	30 220	28 719	14 718
1992-93	19 493	5 969	3 980	1 372	30 814	29 989	15 131
1993-94	20 596	6 628	4 019	1 182	32 426	32 057	16 370
1994-95	21 778	6 704	4 889	1 250	34 621	33 437	16 712
1995-96	23 016	6 750	4 510	1 011	35 287	35 457	17 556
1996-97	23 396	6 802	4 866	1 117	36 181	36 023	18 009
PERCENTAGE CHANGE FROM PREVIOUS YEAR							
1991-92	4.6	6.1	-5.0	-6.5	2.9	1.0	-0.2
1992-93	2.8	2.7	-1.0	-4.0	2.0	4.4	2.8
1993-94	3.8	5.4	-1.1	-13.5	2.6	3.3	8.2
1994-95	5.7	1.1	21.6	5.8	6.8	4.3	2.1
1995-96	5.7	0.7	-7.7	-19.1	1.9	6.0	5.1
1996-97	1.7	0.8	7.9	10.5	2.5	1.6	2.6
QUARTERLY, ORIGINAL (\$m)							
1996-97							
December	6 134	1 711	1 288	264	9 397	9 849	4 624
March	5 615	1 575	1 021	315	8 526	8 634	4 404
June	5 858	1 885	1 352	315	9 409	9 006	4 546
1997-98							
September	5 997	1 747	1 538	219	9 277	n.a.	4 692
December	6 443	1 677	1 313	333	9 992	n.a.	4 898
March	5 964	1 568	1 538	160	9 068	n.a.	4 616
QUARTERLY, TREND (\$m)							
1996-97							
December	5 830	1 678	1 175	293	8 976	8 976	4 498
March	5 861	1 712	1 207	278	9 058	9 049	4 528
June	5 929	1 734	1 268	282	9 213	9 116	4 585
1997-98							
September	6 017	1 733	1 349	288	9 387	n.a.	4 667
December	6 108	1 703	1 418	274	9 502	n.a.	4 748
March	6 197	1 660	1 471	245	9 574	n.a.	4 815
PERCENTAGE CHANGE FROM PREVIOUS QUARTER, TREND							
1996-97							
December	0.5	1.1	1.4	1.7	0.8	0.8	0.9
March	0.5	2.0	2.7	-5.1	0.9	0.8	0.7
June	1.2	1.3	5.1	1.4	1.7	0.7	1.3
1997-98							
September	1.5	-0.1	6.4	2.1	1.9	..	1.8
December	1.5	-1.7	5.1	-4.9	1.2	..	1.7
March	1.5	-2.5	3.7	-10.6	0.8	..	1.4

Period	FINAL CONSUMPTION EXPENDITURE....		GROSS FIXED CAPITAL EXPENDITURE....		State final demand	Gross State product (I)
	Private	Government	Private	Government		
ANNUAL (\$m)						
1991-92	17 447	5 328	3 849	1 364	27 988	27 023
1992-93	17 491	5 358	3 696	1 292	27 837	28 077
1993-94	18 150	5 646	3 655	1 118	28 568	29 004
1994-95	19 020	5 765	4 448	1 175	30 408	29 226
1995-96	19 732	5 713	4 094	948	30 487	30 465
1996-97	19 811	5 711	4 718	1 038	31 278	30 868
PERCENTAGE CHANGE FROM PREVIOUS YEAR						
1991-92	1.6	2.3	-6.0	-7.8	1.4	-2.4
1992-93	0.3	0.6	-4.0	-5.3	-0.5	3.9
1993-94	3.8	5.4	-1.1	-13.5	2.6	3.3
1994-95	4.7	2.1	21.7	5.1	6.4	0.8
1995-96	3.9	-0.9	-8	-19.2	0.3	4.2
1996-97	0.6	-0.5	15.7	9.4	2.7	1.3
QUARTERLY, ORIGINAL (\$m)						
1996-97						
December	5 212	1 417	1 272	245	8 146	8 701
March	4 749	1 322	985	291	7 347	7 280
June	4 967	1 568	1 292	295	8 121	7 524
1997-98						
September	5 071	1 435	1 279	189	7 973	n.a.
December	5 453	1 399	1 464	302	8 619	n.a.
March	5 033	1 286	1 275	146	7 741	n.a.
QUARTERLY, TREND (\$m)						
1996-97						
December	4 954	1 402	1 150	272	7 779	7 717
March	4 965	1 431	1 175	258	7 829	7 701
June	5 019	1 445	1 226	257	7 948	7 662
1997-98						
September	5 094	1 439	1 296	259	8 087	n.a.
December	5 164	1 411	1 345	247	8 167	n.a.
March	5 224	1 382	1 380	223	8 209	n.a.
PERCENTAGE CHANGE FROM PREVIOUS QUARTER, TREND						
1996-97						
December	0.1	0.9	2.2	1.5	0.6	0.1
March	0.2	2.1	2.2	-5.1	0.6	-0.2
June	1.1	1.0	4.3	-0.4	1.5	-0.5
1997-98						
September	1.5	-0.4	5.7	0.8	1.7	..
December	1.4	-1.9	3.8	-4.6	1.0	..
March	1.2	-2.1	2.6	-9.7	0.5	..

4

MERCHANDISE EXPORTS, By Selected Commodity Group(a)

<i>Period</i>	<i>Meat and meat preparations</i>	<i>Cereals and cereal preparations</i>	<i>Wine</i>	<i>Wool and sheepskins</i>	<i>Machinery</i>	<i>Metals and metal manu- factures</i>	<i>Fish and crustaceans</i>	<i>Road vehicles, parts and accessories</i>	<i>Petroleum and petroleum products</i>	<i>Total</i>
	\$'000	\$'000	\$'000	\$'000	\$'000	\$'000	\$'000	\$'000	\$'000	\$'000
ANNUAL										
1991-92	270 237	565 582	165 914	351 096	176 536	489 030	147 532	137 091	341 477	3 431 139
1992-93	282 181	573 375	192 255	318 989	211 426	490 594	154 608	338 359	372 445	3 760 602
1993-94	324 796	436 517	238 366	290 963	223 760	462 355	186 861	351 229	276 473	3 889 783
1994-95	307 785	261 052	250 527	301 645	285 309	571 094	191 386	332 321	285 310	3 829 336
1995-96	244 508	713 092	318 534	240 148	340 205	610 899	196 629	249 237	220 915	4 498 532
1996-97	182 478	745 241	397 949	260 974	378 923	542 204	191 093	655 916	286 458	5 013 434
MONTHLY										
1996-97										
February	17 065	124 924	30 844	22 350	27 097	39 512	20 942	58 234	46 498	511 223
March	17 492	118 000	34 185	22 682	39 619	46 802	23 664	58 579	25 712	507 174
April	17 415	61 511	34 047	25 234	31 992	39 508	19 935	45 176	26 197	416 464
May	16 003	16 145	36 804	26 233	35 384	55 444	15 449	39 717	15 488	367 824
June	15 421	18 998	30 160	23 847	29 641	47 560	11 051	57 105	36 706	406 373
1997-98										
July	12 693	18 848	38 625	31 249	41 558	47 372	16 678	53 516	14 509	407 524
August	11 641	18 718	44 669	17 560	31 082	43 635	18 826	60 483	39 320	419 434
September	15 556	27 719	62 570	24 139	38 751	50 905	18 769	18 938	26 927	383 291
October	17 450	10 488	62 258	23 438	26 461	37 876	23 608	39 356	10 935	360 806
November	21 311	8 739	33 344	29 856	41 032	61 843	18 039	84 083	18 110	455 168
December	22 683	67 164	36 065	35 565	38 300	40 932	13 653	72 253	33 679	483 421
January	15 466	92 923	25 835	20 219	21 783	56 613	24 556	15 137	12 427	372 940
February	21 117	45 385	43 690	17 697	27 617	41 114	18 280	19 097	18 197	364 012
March	23 611	62 230	55 419	25 223	37 489	51 650	22 864	37 642	19 792	473 076
April	19 421	71 158	50 285	15 545	30 764	47 756	21 343	24 203	12 089	407 087

(a) Final stage of production in South Australia.

5

MERCHANDISE EXPORTS, By Selected Countries(a)

Period	EUROPEAN COMMUNITY.....					EAST ASIA.....				
	<i>United States of America</i>	<i>Middle East</i>	<i>United Kingdom</i>	<i>Total European Community</i>	<i>New Zealand</i>	<i>Japan</i>	<i>China</i>	<i>Hong Kong</i>	<i>ASEAN</i>	<i>Total East Asia</i>
	\$'000	\$'000	\$'000	\$'000	\$'000	\$'000	\$'000	\$'000	\$'000	\$'000
ANNUAL										
1991-92	300 139	381 761	220 048	550 258	214 522	647 674	148 308	108 583	437 670	1 627 108
1992-93	352 764	314 049	237 520	594 701	288 421	649 684	208 135	171 803	487 174	1 820 065
1993-94	393 611	280 499	263 092	571 047	311 999	625 481	220 211	165 163	533 977	1 898 975
1994-95	329 878	184 342	246 118	553 051	376 262	682 937	177 875	193 014	551 433	2 004 013
1995-96	279 555	525 348	287 727	691 996	376 628	672 885	293 360	202 307	572 529	2 057 945
1996-97	707 871	563 409	304 645	641 308	382 103	612 115	244 917	234 547	615 018	2 034 488
MONTHLY										
1996-97										
February	57 587	66 413	22 843	49 748	29 728	56 641	27 861	23 395	75 021	209 483
March	69 002	96 254	26 863	67 129	28 319	59 413	22 364	26 559	39 860	182 106
April	59 320	49 119	26 023	52 789	22 885	51 075	33 261	18 598	61 197	185 838
May	49 537	30 815	26 602	63 284	21 142	47 286	17 553	16 373	50 567	166 869
June	83 248	19 843	21 783	60 136	21 859	56 675	15 479	17 994	59 211	180 155
1997-98										
July	75 629	33 014	27 348	60 442	25 538	47 644	31 626	15 779	55 728	178 994
August	80 052	22 224	43 757	72 636	22 840	51 224	21 497	16 567	56 418	175 292
September	25 569	14 786	43 947	79 167	31 036	64 737	22 139	22 409	53 528	182 763
October	26 279	10 465	55 190	89 953	41 159	52 529	27 453	10 146	41 821	149 676
November	92 792	20 278	26 755	56 937	26 456	65 589	33 375	28 165	65 240	224 743
December	80 392	41 986	27 798	60 354	17 402	54 759	33 218	25 288	51 299	196 488
January	19 822	50 590	16 660	37 176	23 869	39 112	24 532	27 247	34 090	155 088
February	33 887	32 808	28 220	69 701	29 889	36 597	36 856	23 072	19 944	137 432
March	63 796	57 813	33 359	77 646	37 502	48 254	37 047	21 167	39 505	180 012
April	38 598	52 322	38 882	77 474	35 451	44 702	12 620	14 098	20 832	125 778

(a) Final stage of production in South Australia.

6

MERCHANDISE EXPORTS, By Industry of Origin(a)

MANUFACTURING.....

Period	Agriculture, forestry and fishing	Mining	Food, beverages and tobacco	Petroleum, coal, chemical associated product	Metal product	Machinery and equipment	Other manu- facturing	Other industries/ confidential	Total
	\$'000	\$'000	\$'000	\$'000	\$'000	\$'000	\$'000	\$'000	\$'000
ANNUAL									
1991-92	882 011	248 846	702 148	201 681	541 522	381 737	178 485	294 709	3 431 139
1992-93	883 725	294 586	766 518	195 387	509 303	641 930	178 726	290 427	3 760 602
1993-94	733 014	245 247	884 737	180 147	475 060	665 066	208 573	497 938	3 889 783
1994-95	592 129	268 537	886 337	186 661	584 838	711 529	243 314	355 991	3 829 336
1995-96	1 014 521	226 309	978 332	172 285	639 267	674 131	226 496	567 191	4 498 532
1996-97	1 067 867	205 433	981 918	290 361	569 715	1 140 136	229 503	528 502	5 013 434
MONTHLY									
1996-97									
January	133 106	1 294	72 585	10 035	33 508	69 654	15 632	43 473	379 289
February	151 003	39 505	86 482	33 856	43 376	93 004	18 510	45 485	511 223
March	140 271	734	97 840	33 514	50 171	106 476	18 821	59 346	507 174
April	88 768	30 741	86 093	17 247	40 315	96 254	19 110	37 936	416 464
May	42 278	991	85 038	27 163	59 593	85 068	20 725	46 969	367 824
June	54 021	32 623	75 807	27 816	51 123	92 591	17 531	54 860	406 373
1997-98									
July	79 999	20 940	83 465	14 706	48 601	105 329	24 710	29 775	407 524
August	51 751	11 810	93 512	37 889	48 749	99 482	24 132	52 109	419 434
September	55 954	22 149	115 722	24 155	55 582	65 692	21 983	22 055	383 291
October	43 738	1 722	119 482	18 055	39 144	73 873	19 047	45 743	360 806
November	45 830	16 715	89 420	25 488	68 051	134 173	22 046	53 446	455 168
December	102 766	28 936	88 028	26 808	45 353	121 923	21 840	47 765	483 421
January	120 949	6 767	77 122	17 938	58 344	43 235	18 399	30 186	372 940
February	77 102	805	91 506	25 843	42 630	56 114	19 687	50 324	364 012
March	110 451	13 279	116 174	23 589	55 706	86 291	29 004	38 582	473 076
April	94 733	706	104 101	22 032	51 478	64 113	20 059	49 865	407 087

(a) Final stage of production in South Australia.

7

MERCHANDISE IMPORTS, By Selected Commodity Group(a)

<i>Period</i>	<i>Food, beverages and tobacco</i>	<i>Petroleum and petroleum products</i>	<i>Chemicals</i>	<i>Textiles</i>	<i>Metals and metal manufactures</i>	<i>Machinery</i>	<i>Road, vehicles, parts and accessories</i>	<i>Other manufactured goods</i>	<i>Total</i>
	\$'000	\$'000	\$'000	\$'000	\$'000	\$'000	\$'000	\$'000	\$'000
ANNUAL									
1991-92	82 095	362 777	153 574	62 884	151 165	523 848	435 121	513 012	2 396 954
1992-93	91 756	570 334	186 001	57 434	255 924	609 212	661 714	521 723	3 068 122
1993-94	99 177	404 626	200 225	60 172	160 937	595 238	663 617	484 590	2 803 446
1994-95	115 930	330 430	220 536	64 524	214 432	695 038	749 658	563 368	3 099 510
1995-96	118 237	346 397	254 102	76 847	213 487	675 869	546 445	728 096	3 114 309
1996-97	136 695	505 633	225 187	79 708	223 259	868 346	538 690	695 238	3 413 043
MONTHLY									
1996-97									
January	9 935	24 997	24 943	8 035	20 890	107 391	42 244	52 370	300 286
February	9 788	52 619	16 510	6 087	20 531	96 667	45 732	46 861	303 870
March	8 356	50 383	28 119	5 065	14 786	50 785	44 387	46 896	257 380
April	10 428	58 416	18 075	7 691	19 477	62 146	55 134	50 015	297 599
May	11 588	45 354	19 293	6 467	15 123	54 510	35 983	48 198	246 008
June	9 424	39 315	20 252	7 109	20 569	66 474	54 586	48 670	283 146
1997-98									
July	10 522	66 543	14 283	6 781	22 112	107 428	83 398	56 474	376 173
August	12 208	29 929	13 882	6 401	24 929	75 139	81 995	53 136	305 788
September	13 380	61 141	13 489	7 031	21 941	79 644	58 896	80 302	343 992
October	15 074	2 052	12 983	8 211	22 588	76 605	67 992	56 732	271 659
November	14 009	67 061	16 244	7 528	21 290	75 565	55 373	51 324	321 544
December	13 857	32 306	22 823	6 607	21 520	115 623	58 610	58 122	342 164
January	13 497	29 721	39 180	8 063	24 670	96 756	54 033	55 500	332 291
February	10 594	39 221	26 096	8 112	27 662	69 833	53 601	55 566	299 119
March	11 294	41 435	31 280	8 679	26 177	86 581	70 443	70 612	357 064
April	10 008	21 834	38 815	9 335	21 158	113 381	61 686	63 134	351 080

(a) Goods released from Customs control in South Australia.

8

TURNOVER OF RETAIL ESTABLISHMENTS, By Industry

Period	Food retailing	Department stores	Clothing and soft good retailing	Household good retailing	Recreational good retailing	Other retailing	Hospitality and services	Total
ANNUAL (\$m)								
1991-92	3 223.7	1 087.4	472.4	833.1	289.6	537.7	1 198.4	7 642.5
1992-93	3 081.8	1 101.5	440.4	829.9	324.5	645.0	1 181.8	7 604.9
1993-94	3 253.3	1 107.8	479.0	917.8	378.1	684.0	1 338.8	8 158.8
1994-95	3 477.3	1 128.8	538.0	959.6	383.8	793.5	1 654.4	8 935.4
1995-96	3 786.5	1 138.5	546.7	1 025.6	431.2	902.8	1 762.0	9 593.2
1996-97	4 065.0	1 121.0	467.0	937.0	425.0	792.8	1 648.1	9 455.8
MONTHLY, ORIGINAL (\$m)								
1996-97								
February	317.3	69.7	28.1	67.0	28.7	56.5	127.1	694.5
March	350.0	82.7	34.9	70.1	32.0	60.7	131.9	762.4
April	331.2	86.2	45.3	73.3	32.6	65.0	128.4	762.1
May	344.6	96.2	45.3	77.2	32.0	71.3	132.4	798.9
June	320.2	80.0	40.7	74.9	29.6	63.9	132.5	741.8
1997-98								
July	355.0	97.9	45.8	83.1	31.6	67.5	123.7	804.6
August	349.6	80.5	38.7	83.5	32.0	66.0	127.4	777.6
September	348.9	84.8	38.8	84.5	33.2	65.8	121.1	777.2
October	370.4	92.0	46.3	94.3	34.6	76.1	126.6	840.2
November	365.4	105.6	45.6	95.5	36.6	79.2	129.0	856.9
December	418.2	106.5	58.3	121.3	52.5	107.7	148.4	1 066.8
January	396.1	93.8	45.3	94.2	33.4	77.0	116.1	856.0
February	344.9	76.0	33.0	81.9	29.1	69.3	107.4	741.5
March	373.6	78.4	42.9	85.2	34.2	75.8	120.4	810.5
April	385.7	91.6	49.7	81.6	31.8	80.9	127.3	848.6
MONTHLY, TREND (\$m)								
1996-97								
February	344.4	93.7	38.3	75.5	33.8	64.9	136.6	788.5
March	344.5	93.3	39.4	75.9	33.4	66.3	137.3	790.6
April	344.5	93.1	40.6	76.6	33.4	67.4	137.8	793.3
May	345.3	93.3	41.8	77.8	33.6	67.9	137.7	797.1
June	347.6	93.8	42.9	79.8	34.0	68.0	136.8	802.6
1997-98								
July	350.5	94.0	43.7	82.3	34.4	68.1	134.8	807.8
August	353.8	93.8	44.1	85.0	34.6	68.9	131.7	811.9
September	357.2	93.7	44.2	88.1	34.6	70.7	127.5	815.9
October	360.7	94.2	44.0	90.9	34.5	73.2	122.9	820.3
November	364.5	95.1	43.9	92.8	34.2	76.0	119.4	825.8
December	369.2	96.3	44.0	93.5	34.0	78.4	117.8	833.0
January	374.3	97.3	44.4	93.3	33.9	80.2	117.8	841.0
February	379.0	97.8	44.8	92.5	33.9	81.5	119.1	848.6
March	382.9	97.6	45.3	91.4	34.0	82.5	121.2	855.5
April	386.2	97.2	45.7	90.0	34.2	83.1	123.7	861.8
PERCENTAGE CHANGE FROM PREVIOUS MONTH, TREND								
1996-97								
February	0.3	-0.3	2.1	0.1	-1.7	1.9	0.4	0.3
March	0.0	-0.4	2.9	0.5	-1.2	2.2	0.5	0.3
April	0.0	-0.2	3.0	0.9	0.0	1.7	0.4	0.3
May	0.2	0.2	3.0	1.6	0.6	0.7	-0.1	0.5
June	0.7	0.5	2.6	2.6	1.2	0.1	-0.7	0.7
1997-98								
July	0.8	0.2	1.9	3.1	1.2	0.1	-1.5	0.6
August	0.9	-0.2	0.9	3.3	0.6	1.2	-2.3	0.5
September	1.0	-0.1	0.2	3.6	0.0	2.6	-3.2	0.5
October	1.0	0.5	-0.5	3.2	-0.3	3.5	-3.6	0.5
November	1.1	1.0	-0.2	2.1	-0.9	3.8	-2.8	0.7
December	1.3	1.3	0.2	0.8	-0.6	3.2	-1.3	0.9
January	1.3	1.0	0.9	-0.2	-0.3	2.3	0.0	1.0
February	1.3	0.5	0.9	-0.9	0.0	1.6	1.1	0.9
March	1.0	-0.2	1.1	-1.2	0.3	1.2	1.8	0.8
April	0.9	-0.4	0.9	-1.5	0.6	0.7	2.1	0.7

Period	ORIGINAL.....			SEASONALLY ADJUSTED.....			TREND ESTIMATE.....		
	Passenger vehicles	Other vehicles	Total	Passenger vehicles	Other vehicles	Total	Passenger vehicles	Other vehicles	Total
ANNUAL									
1991-92	32 351	5 333	37 684
1992-93	32 894	5 577	38 471
1993-94	32 806	5 781	38 587
1994-95	35 830	6 736	42 566
1995-96	36 067	6 828	42 895
1996-97	36 146	6 970	43 116
PERCENTAGE CHANGE FROM PREVIOUS YEAR									
1991-92	-6.9	-19.4	-8.9
1992-93	1.7	4.6	2.1
1993-94	-0.3	3.7	0.3
1994-95	9.2	16.5	10.3
1995-96	0.7	1.4	0.8
1996-97	0.2	2.1	0.5
MONTHLY									
1996-97									
January	2 493	449	2 942	3 118	576	3 694	3 079	581	3 660
February	3 302	525	3 827	3 307	574	3 881	3 152	598	3 749
March	3 034	593	3 627	3 091	622	3 713	3 193	608	3 801
April	3 015	701	3 716	3 263	673	3 936	3 205	608	3 813
May	3 028	612	3 640	3 075	562	3 637	3 211	599	3 810
June	3 659	780	4 439	3 357	593	3 951	3 230	585	3 815
1997-98									
July	3 351	545	3 896	3 227	539	3 766	3 277	571	3 848
August	3 368	508	3 876	3 274	574	3 848	3 362	563	3 925
September	3 619	555	4 174	3 487	577	4 064	3 468	567	4 036
October	3 775	560	4 335	3 537	573	4 110	3 557	581	4 144
November	3 662	537	4 199	3 604	563	4 167	3 608	600	4 219
December	3 781	702	4 483	3 877	661	4 537	3 618	621	4 246
January	2 883	483	3 366	3 657	643	4 300	3 602	644	4 230
February	3 340	640	3 980	3 332	700	4 033	3 579	667	4 186
March	3 661	687	4 348	3 369	592	3 961	3 563	689	4 122
April	3 385	678	4 063	3 812	785	4 597	3 558	710	4 268
PERCENTAGE CHANGE FROM PREVIOUS MONTH									
1996-97									
January	-16.8	-23.2	-17.9	3.8	-0.9	3.1	3.0	3.0	3.0
February	32.5	16.9	30.1	6.1	-0.3	5.1	2.4	2.9	2.4
March	-8.1	13.0	-5.2	-6.5	8.4	-4.3	1.3	1.7	1.4
April	-0.6	18.2	2.5	5.6	8.2	6.0	0.4	0.0	0.3
May	0.4	-12.7	-2.0	-5.8	-16.5	-7.6	0.2	-1.5	-0.1
June	20.8	27.5	22.0	9.2	5.5	8.6	0.6	-2.3	0.1
1997-98									
July	-8.4	-30.1	-12.2	-3.9	-9.1	-4.7	1.5	-2.4	0.9
August	0.5	-6.8	-0.5	1.5	6.5	2.2	2.6	-1.4	2.0
September	7.5	9.3	7.7	6.5	0.5	5.6	3.2	0.7	2.8
October	4.3	0.9	3.9	1.4	-0.7	1.1	2.6	2.5	2.7
November	-3.0	-4.1	-3.1	1.9	-1.7	1.4	1.4	3.3	1.8
December	3.2	30.7	6.8	7.6	17.4	8.9	0.3	3.5	0.6
January	-23.8	-31.2	-24.9	-5.7	-2.7	-5.2	-0.4	3.7	-0.4
February	15.9	32.5	18.2	-8.9	8.9	-6.2	-0.6	3.6	-1.0
March	9.6	7.3	9.2	1.1	-15.4	-1.8	-0.4	3.3	-1.5
April	-7.5	-1.3	-6.6	13.1	32.6	16.1	-0.1	3.0	3.5

Period	INDUSTRY.....			Total	TYPE OF ASSET.....	
	Mining	Manu- facturing	Other selected industries		New buildings and structures	Equipment, plant and machinery
ANNUAL (\$m)						
1991-92	193	763	668	1 625	392	1 233
1992-93	218	564	739	1 522	416	1 105
1993-94	97	613	773	1 484	356	1 128
1994-95	115	829	1 162	2 106	351	1 755
1995-96	196	756	921	1 873	358	1 515
1996-97	489	840	1 251	2 580	594	1 985
PERCENTAGE CHANGE FROM PREVIOUS YEAR						
1991-92	58.4	2.9	-32.3	-12.2	-37.5	0.8
1992-93	12.8	-26.1	10.6	-6.4	6.1	-10.4
1993-94	-55.5	8.7	4.6	-2.5	-14.5	2.0
1994-95	18.3	35.2	50.3	41.9	-1.4	55.6
1995-96	70.4	-8.8	-20.7	-11.1	2.0	-13.7
1996-97	149.5	11.1	35.8	37.7	65.9	31.0
QUARTERLY, ORIGINAL (\$m)						
1996-97						
December	82	234	373	688	172	517
March	79	198	245	521	130	391
June	267	221	234	720	160	563
1997-98						
September	345	170	201	716	159	557
December	447	265	241	953	196	757
March	360	168	193	721	188	534
PERCENTAGE CHANGE FROM PREVIOUS QUARTER, ORIGINAL						
1996-97						
December	34.4	25.1	-6.5	6.3	29.3	0.6
March	-3.7	-15.4	-34.3	-24.3	-24.4	-24.4
June	238.0	11.6	-4.5	38.2	23.1	44.0
1997-98						
September	29.2	-23.1	-14.1	-0.6	-0.6	-1.1
December	29.6	55.9	19.9	33.1	23.3	35.9
March	-19.5	-36.6	-19.9	-24.3	-4.1	-29.5
QUARTERLY, TREND (\$m)						
1996-97						
December	n.a.	n.a.	n.a.	629	148	481
March	n.a.	n.a.	n.a.	633	154	479
June	n.a.	n.a.	n.a.	684	157	527
1997-98						
September	n.a.	n.a.	n.a.	766	164	602
December	n.a.	n.a.	n.a.	881	179	637
March	n.a.	n.a.	n.a.	838	194	644
PERCENTAGE CHANGE FROM PREVIOUS QUARTER, TREND						
1996-97						
December	1.8	11.3	-0.6
March	0.6	4.1	-0.4
June	8.1	1.9	10.0
1997-98						
September	12.0	4.5	14.2
December	6.5	9.1	5.8
March	2.7	8.4	1.1

Period	HOTELS, MOTELS AND GUESTHOUSES WITH FACILITIES.....			HOLIDAY FLATS, UNITS AND HOUSES.....			SHORT-TERM CARAVAN PARKS.....		
	Guest rooms	Room occupancy	Takings	Flats, units and houses	Unit occupancy	Takings	Sites	Site occupancy	Takings
	no.	%	\$'000	no.	%	\$'000	no.	%	\$'000
ANNUAL									
1991-92	10 745	47	130 578	1 302	40.4	10 492	20 601	17.1	19 111
1992-93	10 632	47	129 882	1 338	40.2	10 740	20 038	22.3	20 113
1993-94	10 597	49	138 782	1 338	40.9	11 700	19 591	23.7	20 790
1994-95	10 594	51	149 698	1 342	40.0	11 644	20 175	24.5	22 537
1995-96	10 772	52	161 136	1 356	41.5	12 844	20 187	24.9	23 578
1996-97	10 895	53	164 227	1 467	42.2	14 615	20 248	25.2	24 336
PERCENTAGE CHANGE FROM PREVIOUS YEAR									
1991-92	2.9	..	1.5	7.6	..	1.5	4.1	..	5.6
1992-93	-1.1	..	-0.5	2.8	..	2.4	-2.7	..	5.2
1993-94	-0.3	..	6.9	0.0	..	8.9	-2.2	..	3.4
1994-95	0.0	..	7.9	0.3	..	-0.5	3.0	..	8.4
1995-96	1.7	..	7.6	1.0	..	10.3	0.1	..	4.6
1996-97	1.1	..	1.9	8.1	..	13.8	0.3	..	3.2
QUARTERLY									
1996-97									
September	10 879	48.9	37 567	1 426	35.1	2 885	20 247	21.0	4 735
December	10 951	54.9	43 266	1 470	40.7	3 651	20 260	25.2	6 340
March	10 909	55.4	43 033	1 493	54.1	4 895	20 251	30.4	7 742
June	10 842	51.1	40 361	1 477	38.8	3 184	20 233	24.3	5 519
1997-98									
September	10 885	52.2	41 722	1 465	35.1	2 964	20 844	22.3	5 273
December	10 897	58.3	48 075	1 615	44.0	4 550	20 735	26.9	6 865
PERCENTAGE CHANGE FROM PREVIOUS QUARTER									
1996-97									
September	0.1	..	-4.0	-1.7	..	-1.9	0.6	..	-17.5
December	0.7	..	15.2	3.1	..	26.6	0.1	..	33.9
March	-0.4	..	-0.5	1.6	..	34.1	0.0	..	22.1
June	-0.6	..	-6.2	-1.1	..	-35.0	-0.1	..	-28.7
1997-98									
September	0.4	..	3.4	-0.8	..	-6.9	3.0	..	-4.5
December	0.1	..	15.2	10.2	..	53.5	-0.5	..	30.2

Period	HOUSES.....		TOTAL DWELLING UNITS.....		Alterations and additions to residential building	Total residential building	Non-residential building	Total building
	Private sector	Total	Private sector	Total				
	no.	no.	no.	no.				
					\$m	\$m	\$m	\$m
ANNUAL								
1991-92	8 616	8 934	10 254	11 290	124	879	627	1 506
1992-93	9 715	10 091	11 548	12 341	133	973	418	1 392
1993-94	9 474	9 905	11 046	11 777	122	961	375	1 336
1994-95	7 765	8 155	9 208	9 762	120	860	493	1 353
1995-96	4 938	5 117	5 760	5 968	119	588	566	1 155
1996-97	5 512	5 608	6 148	6 264	117	632	581	1 213
MONTHLY, ORIGINAL								
1996-97								
March	486	501	526	543	8.9	50.7	35.4	86.1
April	559	568	615	628	10.9	63.6	39.2	102.8
May	538	552	599	620	9.9	62.4	64.7	127.1
June	519	541	571	597	9.2	58.7	92.0	150.7
1997-98								
July	572	584	622	634	10.8	61.9	125.1	187.0
August	514	530	552	568	10.1	59.4	63.8	123.2
September	505	527	570	600	10.7	62.5	58.6	121.1
October	523	538	584	599	12.0	63.3	34.1	97.4
November	482	490	544	552	11.1	62.3	64.5	126.7
December	475	482	506	513	10.6	58.6	35.1	93.7
January	365	373	420	431	7.3	44.7	16.1	60.8
February	542	545	663	666	15.6	72.6	41.9	114.5
March	623	671	686	738	10.7	74.3	53.8	128.1
April	461	472	491	502	9.6	53.6	34.6	88.3
MONTHLY, TREND								
1996-97								
March	508	512	547	556	n.a.	n.a.	n.a.	n.a.
April	522	525	570	581	n.a.	n.a.	n.a.	n.a.
May	522	527	578	592	n.a.	n.a.	n.a.	n.a.
June	510	519	570	586	n.a.	n.a.	n.a.	n.a.
1997-98								
July	496	509	554	572	n.a.	n.a.	n.a.	n.a.
August	484	501	535	556	n.a.	n.a.	n.a.	n.a.
September	479	499	524	546	n.a.	n.a.	n.a.	n.a.
October	486	507	531	553	n.a.	n.a.	n.a.	n.a.
November	502	522	552	572	n.a.	n.a.	n.a.	n.a.
December	519	537	577	596	n.a.	n.a.	n.a.	n.a.
January	534	551	599	617	n.a.	n.a.	n.a.	n.a.
February	546	561	614	631	n.a.	n.a.	n.a.	n.a.
March	553	568	621	637	n.a.	n.a.	n.a.	n.a.
April	555	571	619	636	n.a.	n.a.	n.a.	n.a.
PERCENTAGE CHANGE FROM PREVIOUS MONTH, TREND								
1996-97								
April	2.8	2.5	4.2	4.5
May	0.0	0.4	1.4	1.9
June	-2.3	-1.5	-1.4	-1.0
1997-98								
July	-2.7	-1.9	-2.8	-2.4
August	-2.4	-1.6	-3.4	-2.8
September	-1.0	-0.4	-2.1	-1.8
October	1.5	1.6	1.3	1.3
November	3.3	3.0	4.0	3.4
December	3.4	2.9	4.5	4.2
January	2.9	2.6	3.8	3.5
February	2.2	1.8	2.5	2.3
March	1.3	1.2	1.1	1.0
April	0.4	0.5	-0.3	-0.2

13

BUILDING COMMENCEMENTS

Period	NEW HOUSES.....		TOTAL DWELLING UNITS(a).....				NON-RESIDENTIAL BUILDING.....		
	Private sector	Total	Private sector	Total	New residential building	Alterations and additions to residential building	Private sector	Total	Total building
	no.	no.	no.	no.	\$m	\$m	\$m	\$m	\$m
ANNUAL									
1991-92	8 036	8 344	9 635	10 700	727.2	125.1	344.5	607.8	1 460.1
1992-93	9 122	9 416	10 889	11 646	816.2	122.4	205.5	458.7	1 397.2
1993-94	9 159	9 590	10 712	11 501	845.3	126.5	209.9	373.0	1 344.8
1994-95	7 745	8 210	9 132	9 796	765.5	125.3	251.7	518.5	1 409.3
1995-96	4 836	5 070	5 691	5 960	496.5	121.7	452.8	631.8	1 250.0
1996-97	5 057	5 113	5 704	5 790	496.3	116.9	423.4	568.8	1 181.9
QUARTERLY									
1995-96									
March	1 044	1 089	1 237	1 295	109.2	29.4	80.1	139.9	278.4
June	1 153	1 183	1 273	1 307	111.0	28.8	217.7	264.0	403.9
1996-97									
September	1 191	1 207	1 302	1 321	108.7	26.2	67.9	104.2	239.1
December	1 245	1 262	1 513	1 530	133.8	33.8	85.3	113.2	280.8
March	1 099	1 102	1 242	1 247	106.3	26.2	76.6	121.2	253.6
June	1 522	1 541	1 655	1 691	147.5	30.7	193.5	230.2	408.4
1997-98									
September	1 331	1 376	1 451	1 509	131.9	31.6	70.8	112.3	257.7
December	1 531	1 588	1 841	1 906	176.4	34.0	133.7	168.3	378.7
March	1 417	1 444	1 625	1 656	n.y.a.	n.y.a.	n.y.a.	n.y.a.	n.y.a.

(a) Includes conversions.

Period	NEW HOUSES...		NEW RESIDENTIAL BUILDING.....		Alterations and additions to residential building	NON-RESIDENTIAL BUILDING.....		TOTAL BUILDING.....	
	Private sector	Total	Private sector	Total		Private sector	Total	Private sector	Total
	\$m	\$m	\$m	\$m		\$m	\$m	\$m	\$m
ANNUAL									
1991-92	591.5	607.5	693.4	748.5	125.1	310.3	484.1	1 127.5	1 357.6
1992-93	647.2	660.9	743.8	780.6	127.1	297.9	570.9	1 166.3	1 478.6
1993-94	719.1	746.4	828.9	876.3	132.0	217.7	462.1	1 177.2	1 470.4
1994-95	659.6	693.6	766.1	816.4	129.4	271.6	476.9	1 164.3	1 422.7
1995-96	441.4	460.5	512.9	534.8	130.6	311.4	542.1	953.2	1 207.5
1996-97	433.9	438.9	485.2	490.4	122.2	444.2	663.3	1 049.8	1 275.9
QUARTERLY									
1995-96									
June	102.6	105.0	117.6	120.3	32.6	88.1	155.6	238.3	308.5
1996-97									
September	97.3	99.3	109.4	111.3	28.0	83.4	143.8	219.4	283.1
December	109.1	110.6	121.3	122.8	35.4	119.6	189.8	276.0	348.0
March	99.9	100.3	114.1	114.6	26.8	100.8	147.8	241.6	289.2
June	127.6	128.7	140.5	141.7	32.0	140.4	181.9	312.8	355.6
1997-98									
September	122.5	125.8	136.3	139.9	32.9	149.8	186.7	318.5	359.4
December	134.0	137.7	151.2	156.0	36.2	152.8	192.0	339.2	384.1

Period	Pigmeat	Beef	Mutton	Lamb	Gas	Coal	Sawn timber(a)
	tonnes	tonnes	tonnes	tonnes	m MJ	tonnes	m ³
ANNUAL							
1991-92	34 538	90 661	72 578	29 941	78 210	2 819 880	271 603
1992-93	38 153	96 338	65 689	39 334	83 000	2 753 610	317 096
1993-94	38 394	94 395	71 354	45 199	89 382	2 643 000	364 961
1994-95	32 063	99 108	66 759	36 147	86 123	2 554 560	392 349
1995-96	31 695	89 704	55 600	37 735	76 074	2 409 120	413 545
1996-97	29 842	85 478	51 778	34 890	76 495	2 633 820	333 691

PERCENTAGE CHANGE FROM PREVIOUS YEAR

1991-92	-10.6	4.2	10.9	-6.5	6.7	15.5	13.1
1992-93	10.5	6.3	-9.5	31.4	6.1	-2.4	16.7
1993-94	0.6	-2.0	8.6	14.9	7.7	-4.0	15.1
1994-95	-16.5	5.0	-6.4	-20.0	-3.6	-3.3	7.5
1995-96	-1.1	-9.5	-16.7	4.4	-11.7	-5.7	5.4
1996-97	-5.8	-4.7	-6.9	-7.5	0.6	9.3	-19.3

MONTHLY/QUARTERLY

1996-97							
February	2 569	7 234	5 633	3 138
March	2 201	6 855	4 972	2 883	17 945	684 780	68 403
April	2 507	8 366	5 207	3 485
May	2 827	7 616	3 638	3 453
June	2 532	7 178	2 958	3 288	19 777	720 300	83 742
1997-98							
July	2 446	6 820	1 466	1 448
August	2 665	6 042	4 335	2 380
September	2 320	5 842	5 089	2 766	21 942	752 868	91 537
October	2 263	7 881	5 338	3 846
November	2 273	7 870	5 826	3 226
December	1 765	6 574	5 605	2 891	18 997	610 208	83 957
January	2 018	5 790	6 604	3 092
February	2 586	7 883	6 757	3 552
March	2 126	7 716	6 270	3 917	n.y.a.	718 990	89 540.
April	1 823	8 018	5 042	3 763

PERCENTAGE CHANGE FROM PREVIOUS MONTH/QUARTER

1996-97							
February	20.3	-1.5	4.5	-2.9
March	-14.3	-5.2	-11.7	-8.1	1.5	24.4	-20.9
April	13.9	22.0	4.7	20.9
May	12.8	-9.0	-30.1	-0.9
June	-10.4	-5.8	-18.7	-4.8	10.2	5.2	22.4
1997-98							
July	-3.4	-5.0	-50.4	-56.0
August	9.0	-11.4	195.7	64.4
September	-12.9	-3.3	17.4	16.2	10.9	4.5	9.3
October	-2.5	34.9	4.9	39.0
November	0.4	-0.1	9.1	-16.1
December	-22.3	-16.5	-3.8	-10.4	-13.4	-18.9	-8.3
January	14.3	-11.9	17.8	7.0
February	28.1	36.1	2.3	14.9
March	-17.8	-2.1	-7.2	10.3	n.y.a.	17.8	6.6.
April	-14.3	3.9	-19.6	-3.9

(a) From Australian softwood logs only.

<i>Period</i>	<i>Food</i>	<i>Clothing</i>	<i>Housing</i>	<i>Household equipment and operation</i>	<i>Transport- ation</i>	<i>Tobacco and alcohol</i>	<i>Health and personal care</i>	<i>Recreation and education</i>	<i>All groups</i>
ANNUAL AVERAGE (1989-90 = 100)									
1991-92	106.0	105.3	100.4	107.5	110.5	118.6	127.8	107.7	108.9
1992-93	109.3	107.0	94.3	107.6	115.0	131.2	134.9	110.7	111.2
1993-94	111.7	106.6	92.1	108.0	117.8	141.5	142.7	113.7	113.4
1994-95	115.1	104.9	97.8	109.2	120.2	148.9	151.3	116.3	116.9
1995-96	118.2	105.1	103.6	112.1	124.5	160.1	158.9	118.0	121.2
1996-97	120.8	105.5	98.9	113.4	124.6	165.3	165.4	121.1	122.3
PERCENTAGE CHANGE FROM PREVIOUS YEAR, ANNUAL AVERAGE									
1991-92	2.1	1.6	-3.6	2.0	3.3	5.9	12.7	2.8	2.5
1992-93	3.1	1.6	-6.1	0.1	4.1	10.6	5.6	2.8	2.1
1993-94	2.2	-0.4	-2.3	0.4	2.4	7.9	5.8	2.7	2.0
1994-95	3.0	-1.6	6.2	1.1	2.0	5.2	6.0	2.2	3.1
1995-96	2.7	0.2	5.9	2.7	3.6	7.6	5.0	1.5	3.7
1996-97	2.2	0.3	-4.5	1.2	0.0	3.3	4.1	2.6	0.9
QUARTERLY (1989-90 = 100.0)									
1996-97									
December	120.7	106.0	100.5	113.8	125.5	164.9	164.9	119.8	122.6
March	121.2	105.1	97.5	113.3	125.6	165.2	167.7	122.3	122.6
June	121.9	105.2	94.1	113.6	122.7	166.5	168.0	122.9	121.9
1997-98									
September	122.0	105.4	92.2	113.6	123.2	167.2	158.6	123.7	121.2
December	122.0	106.2	90.2	113.6	122.3	168.8	164.1	123.6	121.2
March	122.9	105.1	89.9	113.7	121.2	170.7	167.8	125.5	121.7
PERCENTAGE CHANGE FROM SAME QUARTER OF PREVIOUS YEAR									
1996-97									
December	2.1	0.8	-3.2	1.6	1.0	3.3	3.9	2.1	1.2
March	2.5	0.2	-6.2	0.8	1.4	1.8	4.2	2.9	0.8
June	3.0	-0.3	-9.4	1.2	-2.1	1.8	4.6	3.1	-0.1
1997-98									
September	2.3	-0.1	-10.9	0.5	-1.0	1.5	-1.4	3.8	-0.8
December	1.1	0.2	-10.2	-0.2	-2.5	2.4	-0.5	3.2	-1.1
March	1.4	0.0	-7.8	0.4	-3.5	3.3	0.1	2.6	-0.7
PERCENTAGE CHANGE FROM PREVIOUS QUARTER									
1996-97									
December	1.3	0.5	-2.9	0.7	0.9	0.1	2.5	0.5	0.3
March	0.4	-0.8	-3.0	-0.4	0.1	0.2	1.7	2.1	0.0
June	0.6	0.1	-3.5	0.3	-2.3	0.8	0.2	0.5	-0.6
1997-98									
September	0.1	0.2	-2.0	0.0	0.4	0.4	-5.6	0.7	-0.6
December	0.0	0.8	-2.2	0.0	-0.7	1.0	3.5	-0.1	0.0
March	0.7	-1.0	-0.3	0.1	-0.9	1.1	2.3	1.5	0.4

		QUARTER.....				
		Mar	June	Sep	Dec	Mar
		1997	1997	1997	1997	1998
Item	Unit	cents	cents	cents	cents	cents
Milk, carton, supermarket sales	1 L	116	122	122	124	127
Cheese, processed, sliced, wrapped	500 g	318	320	323	322	323
Butter	500 g	167	161	164	167	175
Bread, white loaf, sliced, supermarket sales	680 g	153	160	161	163	165
Self-raising flour	2 kg	240	235	239	236	235
Beef						
Rump steak	1 kg	1 157	1 141	1 135	1 098	1 197
Corned silverside	1 kg	597	602	626	590	596
Lamb						
Leg	1 kg	572	574	565	535	534
Loin chops	1 kg	799	792	794	796	794
Forequarter chops	1 kg	568	547	534	575	577
Pork						
Leg	1 kg	616	574	622	618	601
Loin chops	1 kg	799	792	802	788	812
Chicken, frozen	1 kg	351	370	362	351	362
Bacon, middle rashers	250 g pkt	325	295	321	295	322
Sausages	1 kg	359	360	360	351	357
Potatoes	1 kg	78	108	111	104	69
Onions	1 kg	134	114	127	165	122
Peaches, canned	825 g	182	185	188	185	193
Eggs, 55g	doz.	246	246	239	235	238
Sugar, white	2 kg	183	182	185	183	201
Tea	250 g	169	175	182	183	217
Coffee, instant, jar	150 g	500	539	573	592	588
Margarine, polyunsaturated	500 g	141	133	144	142	141
Petrol						
Leaded	1 L	77.5	75.4	74.5	75.0	71.5
Unleaded	1 L	75.2	73.0	72.2	72.6	72.0

NET MIGRATION.....

<i>Period</i>	<i>Live births(a)</i>	<i>Deaths(a)</i>	<i>Natural increase</i>	<i>Interstate</i>	<i>Overseas(b)</i>	<i>Total increase</i>	<i>Population at end of period(c)</i>
ANNUAL							
1991-92	19 530	11 035	8 532	- 133	2 897	11 296	1 456 523
1992-93	19 686	11 163	8 403	-4 650	1 546	5 299	1 460 730
1993-94	20 036	11 743	7 949	-3 466	1 994	6 477	1 466 127
1994-95	19 569	11 501	7 902	-6 529	2 883	4 256	1 469 411
1995-96	18 959	11 294	7 645	-6 238	4 119	5 526	1 474 253
1996-97	18 945	11 683	7 258	-5 185	3 480	5 553	1 479 806
MONTHLY/QUARTERLY							
1996-97							
September	1 464	977	1 575	-1 746	902	731	1 474 984
October	1 779	1 196
November	1 536	835
December	1 424	920	1 780	-1 565	1 003	1 218	1 476 202
January	1 582	911
February	1 498	827
March	1 301	758	1 880	-1 368	1 228	1 740	1 477 942
April	1 673	935
May	1 805	1 080
June	1 492	959	2 023	-506	347	1 864	1 479 806
1997-98							
July	1 624	1 099
August	1 448	1 066
September	1 481	1 068	1 322	-654	1 124	1 792	1 481 598
October	1 581	1 116
November	1 460	877
December	1 459	960	1 544	-871	598	1 271	1 482 869

(a) Registrations.

(b) Includes category jumping.

Period	EMPLOYED FULL-TIME.....		EMPLOYED PART-TIME.....		TOTAL EMPLOYED.....		UNEMPLOYED..		LABOUR FORCE.....	
	Males	Females	Males	Females	Males	Females	Males	Females	Males	Females
ANNUAL AVERAGE ('000)										
1991-92	323.3	145.7	37.5	121.6	360.8	267.3	50.0	29.3	410.8	296.6
1992-93	322.2	143.2	39.2	126.8	361.4	270.0	51.9	29.9	413.3	299.9
1993-94	322.0	146.3	40.0	127.0	362.0	273.3	47.3	29.9	409.3	303.2
1994-95	323.1	151.5	42.6	131.3	365.7	282.8	44.6	28.7	410.3	311.5
1995-96	325.2	150.0	45.5	136.7	370.7	286.7	42.6	26.0	413.2	312.7
1996-97	320.8	150.5	48.6	140.7	369.4	291.2	42.1	27.5	411.5	318.7
MONTHLY, ORIGINAL ('000)										
1996-97										
April	319.9	148.2	49.3	143.2	369.2	291.5	43.8	27.4	413.0	318.8
May	318.3	149.2	51.6	140.2	369.9	289.4	44.0	25.7	413.9	315.1
June	324.9	151.1	49.1	141.6	374.0	292.7	41.4	26.8	415.4	319.5
1997-98										
July	325.9	149.3	47.5	140.1	373.4	289.4	40.9	27.0	414.3	316.5
August	323.3	143.1	50.0	142.9	373.3	290.4	42.1	25.6	415.3	311.6
September	325.0	144.7	50.4	145.2	375.3	286.1	44.5	27.7	419.9	317.5
October	324.1	145.2	49.6	143.6	373.7	289.9	43.2	26.6	416.9	315.4
November	324.0	147.8	49.2	142.4	373.2	290.3	42.5	26.7	415.8	317.0
December	329.8	151.7	47.1	135.8	376.9	287.5	42.8	28.3	419.7	315.8
January	325.1	147.6	43.3	127.3	368.4	274.9	46.1	32.8	414.5	307.7
February	318.2	148.2	50.0	132.1	368.2	280.2	45.8	31.1	414.0	311.3
March	317.2	148.7	50.4	129.6	367.6	278.2	41.7	31.9	409.3	310.2
April	317.4	145.6	52.2	133.3	369.7	278.9	39.1	28.6	408.8	307.5
May	314.6	142.9	48.7	132.0	363.3	274.9	42.5	29.9	405.8	304.8
MONTHLY, TREND ('000)										
1996-97										
April	321.6	150.7	49.3	140.8	370.9	291.5	43.0	27.4	413.9	318.9
May	322.3	150.3	49.6	140.0	371.9	290.3	43.3	27.5	415.2	317.8
June	323.3	149.4	49.7	139.7	373.0	289.1	43.4	27.6	416.4	316.7
1997-98										
July	324.1	148.3	49.8	140.1	373.9	288.4	43.4	27.7	417.3	316.1
August	324.6	147.1	49.9	141.2	374.5	288.3	43.4	27.8	417.9	316.1
September	324.8	146.2	49.9	142.1	374.7	288.3	43.4	27.8	418.1	316.1
October	324.7	145.8	49.5	142.3	374.2	288.1	43.4	27.9	417.6	316.0
November	324.2	146.1	48.9	141.1	373.1	287.2	43.4	28.0	416.5	315.2
December	323.4	146.9	48.5	138.8	371.9	285.7	43.2	28.3	415.1	314.0
January	322.4	147.5	48.2	136.2	370.6	283.7	42.8	28.7	413.4	312.4
February	321.2	147.6	48.1	133.8	369.3	281.4	42.3	29.0	411.6	310.4
March	319.8	147.3	48.3	132.0	368.1	279.3	41.9	29.4	410.0	308.7
April	318.4	146.8	48.6	130.5	367.0	277.3	41.6	29.7	408.6	307.0
May	317.2	146.1	48.9	129.6	366.1	275.7	41.4	29.9	407.5	305.6
PERCENTAGE CHANGE FROM PREVIOUS MONTH, TREND										
1996-97										
April	0.1	0.1	0.6	-0.7	0.2	-0.3	0.9	0.7	0.3	-0.2
May	0.2	-0.3	0.6	-0.6	0.3	-0.4	0.7	0.4	0.3	-0.3
June	0.3	-0.6	0.2	-0.2	0.3	-0.4	0.2	0.4	0.3	-0.3
1997-98										
July	0.2	-0.7	0.2	0.3	0.2	-0.2	0.0	0.4	0.2	-0.2
August	0.2	-0.8	0.2	0.8	0.2	0.0	0.0	0.4	0.1	0.0
September	0.1	-0.6	0.0	0.6	0.1	0.0	0.0	0.0	0.0	0.0
October	0.0	-0.3	-0.8	0.1	-0.1	-0.1	0.0	0.4	-0.1	0.0
November	-0.2	0.2	-1.2	-0.8	-0.3	-0.3	0.0	0.4	-0.3	-0.3
December	-0.2	0.5	-0.8	-1.6	-0.3	-0.5	-0.5	1.1	-0.3	-0.4
January	-0.3	0.4	-0.6	-1.9	-0.3	-0.7	-0.9	1.4	-0.4	-0.5
February	-0.4	0.1	-0.2	-1.8	-0.4	-0.8	-1.2	1.0	-0.4	-0.6
March	-0.4	-0.2	0.4	-1.3	-0.3	-0.7	-0.9	1.4	-0.4	-0.5
April	-0.4	-0.3	0.6	-1.1	-0.3	-0.7	-0.7	1.0	-0.3	-0.6
May	-0.4	-0.5	0.6	-0.7	-0.2	-0.6	-0.5	0.7	-0.3	-0.5

(a) Population aged 15 and over.

Period	CIVILIAN POPULATION....		UNEMPLOYMENT RATE.....				PARTICIPATION RATE..		
	Males aged 15 and over	Females aged 15 and over	Persons aged 15-19	Males all ages	Females all ages	Persons all ages	Males	Females	Persons
	'000	'000	%	%	%	%	%	%	%
ANNUAL AVERAGE									
1991-92	563.9	585.4	25.0	12.1	9.9	11.2	72.9	50.7	61.6
1992-93	567.4	588.9	26.6	12.6	10.0	11.5	72.8	51.0	61.7
1993-94	570.6	592.0	28.3	11.5	9.8	10.8	71.7	51.2	61.3
1994-95	573.7	594.7	25.2	10.9	9.2	10.2	71.5	52.4	61.8
1995-96	576.2	597.1	27.2	10.3	8.3	9.5	71.7	52.4	61.9
1996-97	579.8	600.6	23.7	10.2	8.6	9.5	71.0	53.1	61.9
PERCENTAGE CHANGE FROM PREVIOUS YEAR									
1991-92	1.0	1.0
1992-93	0.6	0.6
1993-94	0.6	0.6
1994-95	0.6	0.5
1995-96	0.4	0.5
1996-97	0.6	0.4
MONTHLY, ORIGINAL									
1996-97									
February	580.3	601.0	23.5	10.7	9.4	10.1	71.1	53.7	62.2
March	580.5	601.2	22.7	10.0	9.1	9.6	71.5	53.8	62.5
April	580.8	601.5	26.7	10.6	8.6	9.7	71.1	53.0	61.9
May	581.1	601.8	23.7	10.6	8.2	9.6	71.2	52.4	61.6
June	581.5	602.2	24.3	10.0	8.4	9.3	71.4	53.1	62.1
1997-98									
July	581.9	602.6	21.6	9.9	8.5	9.3	71.2	52.5	61.7
August	582.3	602.9	21.2	10.1	8.2	9.3	71.3	51.7	61.3
September	582.7	603.3	23.2	10.6	8.7	9.8	72.1	52.6	62.2
October	583.1	603.7	22.5	10.4	8.4	9.5	71.5	52.2	61.7
November	583.6	604.1	20.9	10.2	8.4	9.5	71.3	52.5	61.7
December	584.0	604.5	23.3	10.2	8.9	9.7	71.9	52.2	61.9
January	584.3	604.8	26.5	11.1	10.7	10.9	70.9	50.9	60.7
February	584.5	605.1	24.8	11.1	10.0	10.6	70.8	51.5	61.0
March	584.8	605.3	26.1	10.2	10.3	10.2	70.0	51.2	60.5
April	585.1	605.6	23.0	9.6	9.3	9.4	69.9	50.8	60.2
May	585.4	605.9	24.8	10.5	9.8	10.2	69.3	50.3	59.7
MONTHLY, TREND									
1996-97									
February	n.a.	n.a.	n.a.	10.2	8.5	9.5	70.9	53.2	61.9
March	n.a.	n.a.	n.a.	10.3	8.5	9.5	71.1	53.2	62.0
April	n.a.	n.a.	n.a.	10.4	8.6	9.6	71.3	53.0	62.0
May	n.a.	n.a.	n.a.	10.4	8.7	9.7	71.4	52.8	62.0
June	n.a.	n.a.	n.a.	10.4	8.7	9.7	71.6	52.6	61.9
1997-98									
July	n.a.	n.a.	n.a.	10.4	8.8	9.7	71.7	52.5	61.9
August	n.a.	n.a.	n.a.	10.4	8.8	9.7	71.8	52.4	61.9
September	n.a.	n.a.	n.a.	10.4	8.8	9.7	71.7	52.4	61.9
October	n.a.	n.a.	n.a.	10.4	8.8	9.7	71.6	52.3	61.9
November	n.a.	n.a.	n.a.	10.4	8.9	9.8	71.4	52.2	61.6
December	n.a.	n.a.	n.a.	10.4	9.0	9.8	71.1	51.9	61.3
January	n.a.	n.a.	n.a.	10.4	9.2	9.9	70.7	51.6	61.0
February	n.a.	n.a.	n.a.	10.3	9.4	9.9	70.4	51.3	60.7
March	n.a.	n.a.	n.a.	10.2	9.5	9.9	70.1	51.0	60.4
April	n.a.	n.a.	n.a.	10.2	9.7	10.0	69.8	50.7	60.1
May	n.a.	n.a.	n.a.	10.2	9.8	10.0	69.6	50.4	59.9

(a) Population aged 15 and over.

Period	FULL-TIME ADULTS ORDINARY TIME EARNINGS..			FULL-TIME ADULTS TOTAL EARNINGS.....			ALL EMPLOYEES TOTAL EARNINGS.....		
	Males	Females	Persons	Males	Females	Persons	Males	Females	Persons
ANNUAL AVERAGE (\$ per week)									
1991-92	588.40	524.10	567.80	624.90	534.00	595.80	564.80	386.90	483.70
1992-93	610.10	534.90	585.40	646.40	546.80	613.70	560.00	382.60	477.40
1993-94	625.10	547.60	600.00	667.50	560.10	632.70	595.10	396.60	503.30
1994-95	632.70	559.10	608.20	681.70	572.50	645.30	599.90	411.90	513.40
1995-96	653.80	555.90	622.80	703.20	568.50	660.10	620.10	403.90	520.70
1996-97	678.20	575.10	644.30	735.10	589.40	687.20	636.90	408.70	529.80
PERCENTAGE CHANGE FROM PREVIOUS YEAR									
1991-92	4.8	7.8	5.6	4.3	7.6	5.1	3.3	8.0	4.7
1992-93	3.7	2.1	3.1	3.4	2.4	3.0	-0.8	-1.1	-1.3
1993-94	2.5	2.4	2.5	3.3	2.4	3.1	6.3	3.7	5.4
1994-95	1.2	2.1	1.4	2.1	2.2	2.0	0.8	3.9	2.0
1995-96	3.3	-0.6	2.4	3.1	-0.7	2.3	3.4	-1.9	1.4
1996-97	3.7	3.5	3.5	4.5	3.7	4.1	2.7	1.2	1.8
QUARTERLY (\$ per week)									
1996-97									
15 November	669.60	575.30	639.50	728.30	591.80	684.80	626.80	402.30	522.20
21 February	685.60	578.20	649.70	741.90	594.00	692.40	639.80	409.50	530.80
16 May	690.90	584.50	655.70	750.00	597.20	699.30	652.30	419.50	542.50
1997-98									
15 August	703.90	583.70	663.40	756.20	593.50	701.40	651.00	420.00	542.50
21 November	689.70	594.20	655.00	739.90	607.40	691.80	631.70	433.90	533.90
20 February	715.10	626.20	683.60	764.60	642.10	721.20	656.10	447.70	553.60
PERCENTAGE CHANGE FROM CORRESPONDING REFERENCE DATE IN PREVIOUS YEAR									
1996-97									
15 November	3.4	4.8	3.8	5.1	5.5	5.2	3.2	1.5	2.3
21 February	4.1	3.8	3.7	4.0	4.3	3.8	1.3	1.8	0.7
16 May	3.3	4.9	3.5	4.0	4.4	3.7	1.8	2.7	1.5
1997-98									
15 August	5.6	3.8	4.9	5.0	3.3	4.3	3.6	4.1	3.6
21 November	3.0	3.3	2.4	1.6	2.6	1.0	0.8	7.9	2.2
20 February	4.3	8.3	5.2	3.1	8.1	4.2	2.5	9.3	4.3
PERCENTAGE CHANGE FROM PREVIOUS REFERENCE DATE									
1996-97									
15 November	0.4	2.3	1.1	1.1	3.0	1.9	-0.3	-0.3	-0.3
21 February	2.4	0.5	1.6	1.9	0.4	1.1	2.1	1.8	1.6
16 May	0.8	1.1	0.9	1.1	0.5	1.0	2.0	2.4	2.2
1997-98									
15 August	1.9	-0.1	1.2	0.8	-0.6	0.3	-0.2	0.1	0.0
21 November	-2.0	1.8	-1.3	-2.2	2.3	-1.4	-3.0	3.3	-1.6
20 February	3.7	5.4	4.4	3.3	5.7	4.2	3.9	3.2	3.7

SECURED HOUSING
FINANCE COMMITMENTS.....

Period	Dwelling units	Value	Alterations and additions	Personal finance commitments	Commercial finance commitments	Lease finance commitments
	no.	\$m	\$m	\$m	\$m	\$m
ANNUAL						
1991-92	31 765	2 083.8	88.8	1 456.7	6 667.9	256.2
1992-93	36 960	2 569.5	102.8	1 656.9	5 122.5	249.5
1993-94	45 725	3 387.9	221.8	1 840.3	5 467.2	250.6
1994-95	36 429	2 879.7	242.2	2 152.2	5 405.6	271.4
1995-96	38 707	2 982.2	240.7	2 211.5	6 516.2	265.4
1996-97	36 680	2 956.1	188.1	2 612.0	6 092.4	232.0

PERCENTAGE CHANGE FROM PREVIOUS YEAR

1991-92	10.7	20.4	51.0	-3.1	6.6	-20.7
1992-93	16.4	23.3	15.8	13.7	-23.2	-2.6
1993-94	23.7	31.9	115.7	11.1	6.7	0.5
1994-95	-20.3	-15.0	9.2	16.9	-1.1	8.3
1995-96	6.3	3.6	-0.6	2.8	20.5	-2.2
1996-97	-5.2	-0.9	-21.9	18.1	-6.5	-12.6

MONTHLY

1996-97						
February	3 013	246.6	16.4	214.4	415.3	15.3
March	3 117	251.4	12.9	241.7	526.5	13.9
April	3 318	270.4	15.5	251.6	487.5	21.6
May	3 228	264.5	14.8	251.7	561.6	20.7
June	3 172	253.3	11.9	249.8	497.9	30.6
1997-98						
July	3 004	243.4	10.8	278.3	640.2	29.8
August	3 085	251.1	10.4	204.6	377.0	21.8
September	3 033	252.6	9.9	218.5	556.2	21.7
October	3 138	265.4	13.2	221.1	619.2	21.6
November	2 996	255.5	11.5	219.7	452.4	17.8
December	3 200	274.7	10.1	233.3	831.4	20.0
January	2 563	210.9	8.9	196.5	379.1	15.3
February	3 107	254.1	10.3	209.4	409.2	18.6
March	3 349	282.8	15.8	250.7	518.2	24.2
April	3 236	272.6	12.6	227.6	466.3	16.1

PERCENTAGE CHANGE FROM PREVIOUS MONTH

1996-97						
February	4.4	6.6	7.0	-3.0	1.5	11.5
March	3.5	2.0	-21.3	12.8	26.8	-8.7
April	6.4	7.5	19.6	4.1	-7.4	55.3
May	-2.7	-2.2	-4.3	0.0	15.2	-4.2
June	-1.7	-4.2	-19.8	-0.7	-11.3	47.6
1997-98						
July	-5.3	-3.9	-9.0	11.4	28.6	-2.7
August	2.7	3.1	-3.9	-26.5	-41.1	-27.0
September	-1.7	0.6	-4.3	7.6	47.9	-0.4
October	3.5	5.1	33.2	0.4	11.1	-0.5
November	-4.5	-3.7	-12.8	-0.6	-26.9	-17.7
December	6.8	7.5	-12.0	6.2	83.8	12.4
January	-19.9	-23.2	-12.1	-15.8	-54.4	-23.5
February	23.1	22.3	15.4	6.6	7.9	21.6
March	7.8	11.3	53.7	19.8	26.6	30.3
April	-3.4	-3.6	-20.4	-9.2	-10.0	-33.4

PUBLICATIONS SOURCE INDEX

- (1) *Australian National Accounts, Quarterly State Details* (Cat. no. 5206.0.40.001)
- (2) *International Merchandise Trade, Australia* (Cat. no. 5422.0) Quarterly
- (3) *Retail Trade, Australia* (Cat. no. 8501.0) Monthly
- (4) *New Motor Vehicles Registrations, Australia, Preliminary* (Cat. no. 9301.0) Monthly
- (5) *State Estimates of Private New Capital Expenditure* (Cat. no. 5646.0) Quarterly
- (6) *Tourist Accommodation, Australia* (Cat. no. 8635.0) Quarterly
- (7) *Building Approvals, Australia* (Cat. no. 8731.0) Monthly
- (8) *Building Activity, Australia* (Cat. no. 8752.0) Quarterly
- (8a) *Building Activity, Australia, Dwelling Unit Commencements, Preliminary* (Cat. no. 8750.0) Quarterly
- (9) *Engineering Construction Activity, Australia* (Cat. no. 8762.0) Quarterly
- (10) *Manufacturing Production, Australia, Preliminary* (Cat. no. 8301.0) Monthly
- (11) *Livestock Products, Australia* (Cat. no. 7215.0) Monthly
- (12) *Actual and Expected Private Mineral Exploration, Australia* (Cat. no. 8412.0) Quarterly
- (13) *Consumer Price Index* (Cat. no. 6401.0) Quarterly
- (14) *Price Index of Materials Used in House Building, Six State Capital Cities and Canberra* (Cat. no. 6408.0) Monthly
- (15) *Price Index of Materials Used in Building Other Than House Building, Six State Capital Cities and Canberra* (Cat. no. 6407.0) Monthly
- (16) *House Price Indexes: Eight Capital Cities* (Cat. no. 6416.0) Quarterly
- (17) *Australian Demographic Statistics* (Cat. no. 3101.0) Quarterly
- (18) *Labour Force, Australia, Preliminary* (Cat. no. 6202.0) Monthly
- (19) *Job Vacancies and Overtime, Australia* (Cat. no. 6354.0) Quarterly
- (20) *Industrial Disputes, Australia* (Cat. no. 6321.0) Monthly
- (21) Unpublished overseas arrival and departure statistics on microfiche
- (22) *Average Weekly Earnings, States and Australia* (Cat. no. 6302.0) Quarterly
- (23) *Wage Cost Index, Australia* (Cat. no. 6345.0) Quarterly
- (24) *Housing Finance for Owner Occupation, Australia* (Cat. no. 5609.0) Monthly
- (25) Unpublished statistics available from PC AUSSTATS
- (26) *Reserve Bank of Australia Bulletin*

SELF-HELP ACCESS TO STATISTICS

PHONE Call 1900 986 400 for the latest statistics on CPI, Labour Force, Earnings, National Accounts, Balance of Payments and other topics. (Call cost is 75c per minute)

INTERNET <http://www.abs.gov.au>

LIBRARY A range of ABS publications is available from public and tertiary libraries Australia wide. Contact your nearest library to determine whether it has the ABS statistics you require.

WHY NOT SUBSCRIBE?

PHONE +61 1300 366 323

FAX +61 3 9615 7848

CONTACTING THE ABS

ABS provides a range of services, including: a telephone inquiry service; information consultancy tailored to your needs; survey, sample and questionnaire design; survey evaluation and methodological reviews; and statistical training.

<i>INQUIRIES</i>	<i>By phone</i>	<i>By fax</i>
Canberra	02 6252 6627	02 6253 1404
Sydney	02 9268 4611	02 9268 4668
Melbourne	03 9615 7755	03 9615 7798
Brisbane	07 3222 6351	07 3222 8283
Perth	08 9360 5140	08 9360 5955
Adelaide	08 8237 7400	08 8237 7566
Hobart	03 6222 5800	03 6222 5995
Darwin	08 8943 2111	08 8981 1218

POST Client Services, ABS, PO Box 10, Belconnen, ACT 2616

EMAIL client.services@abs.gov.au



2130740007989

ISSN 1039-8880

RRP \$19.50